

# The Cell

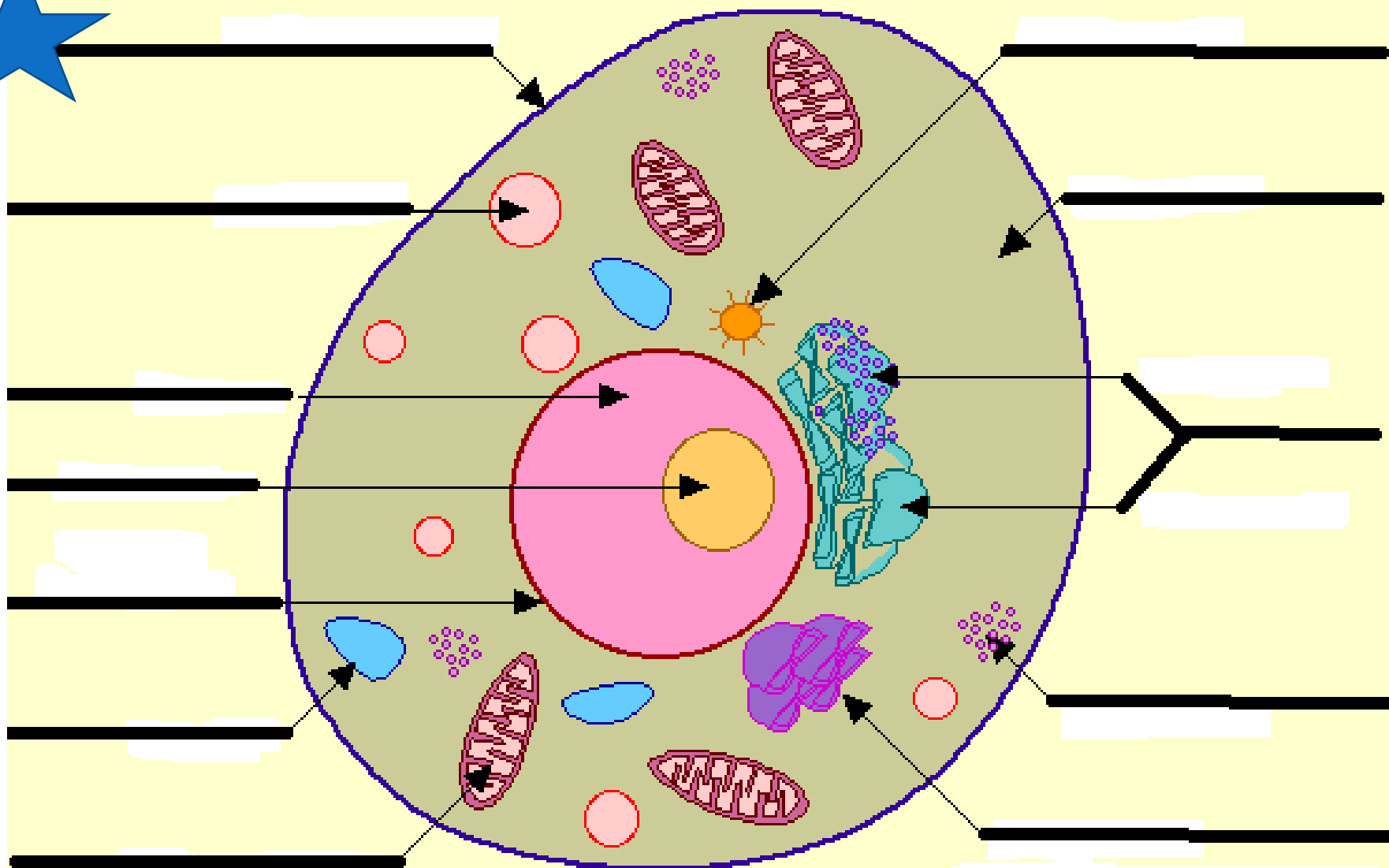
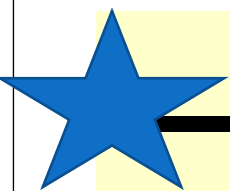
A cell is the smallest part of any living thing. There are many parts of a cell. Each part of a cell completes a certain function for the cell.

# Most cells include the following parts:

- Cell Membrane
- Cytoplasm
- Organelles
- Nucleus
- Nucleolus
- Chromatin
- Centrosome
- Nuclear Membrane
- Endoplasmic Reticulum
- Ribosomes
- Golgi Apparatus
- Mitochondria
- Lysosomes
- Vacuoles

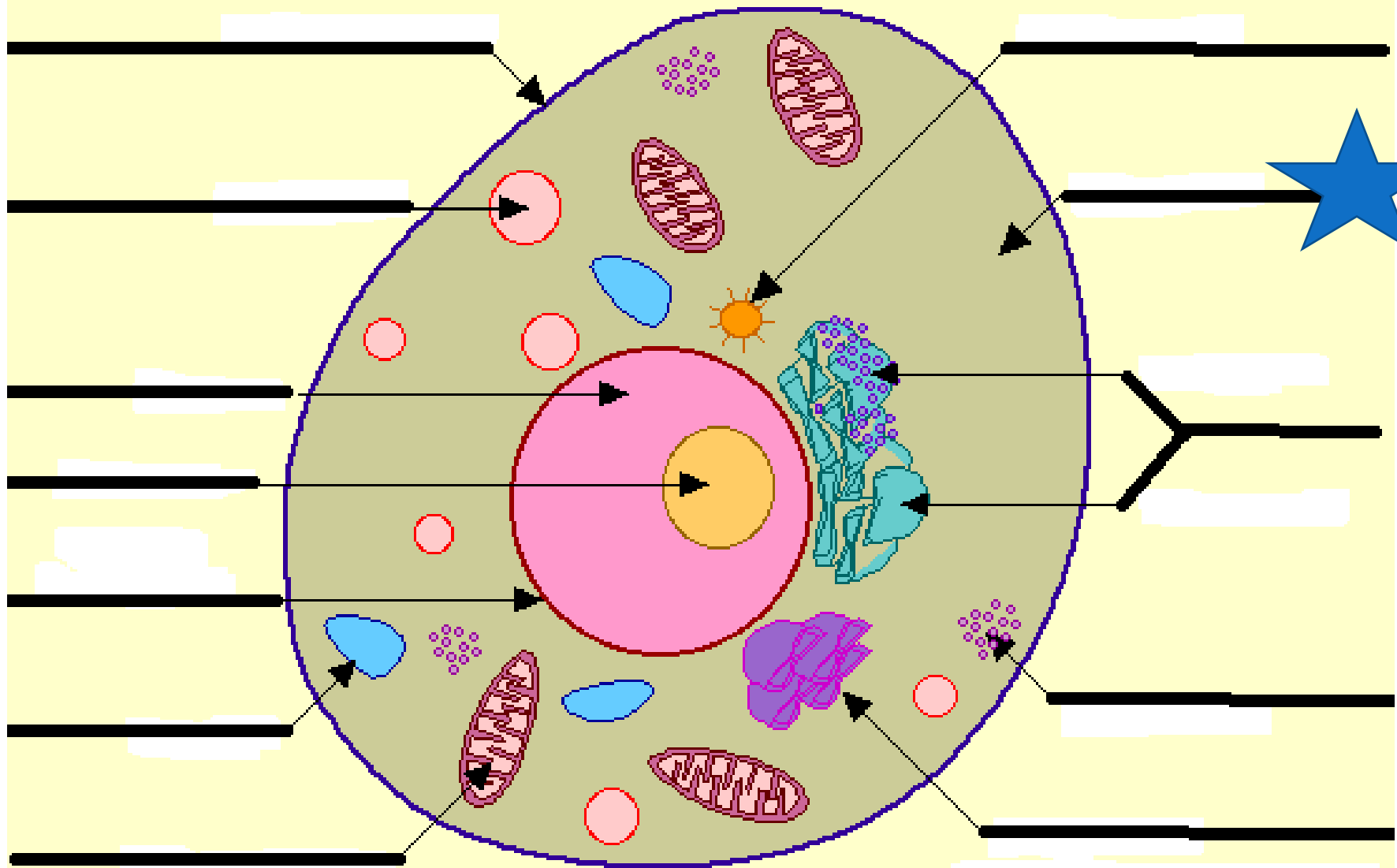
# Cell Membrane

- forms the outer boundary of the cell and allows only certain materials to move into or out of the cell.



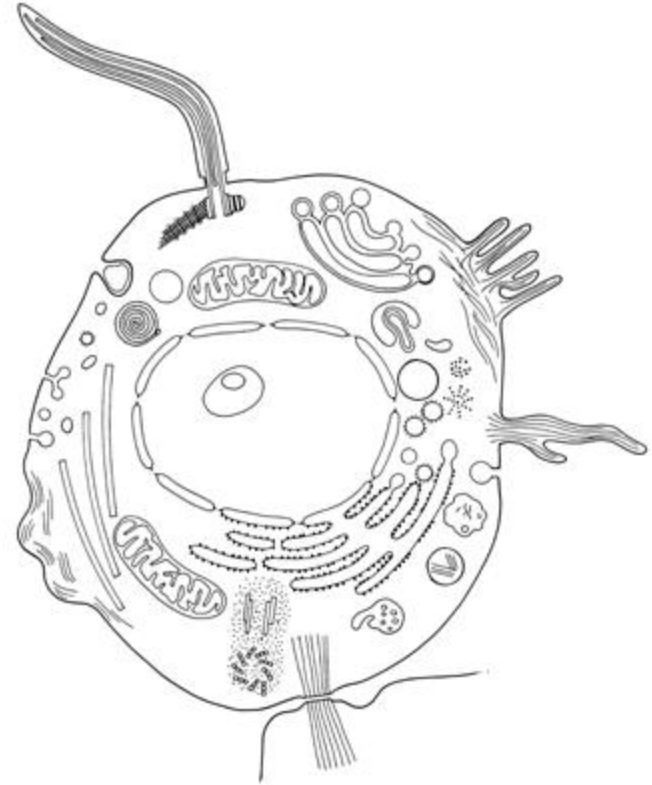
# Cytoplasm

- a gel-like material inside the cell; contains water and nutrients for the cell.



# Organelles

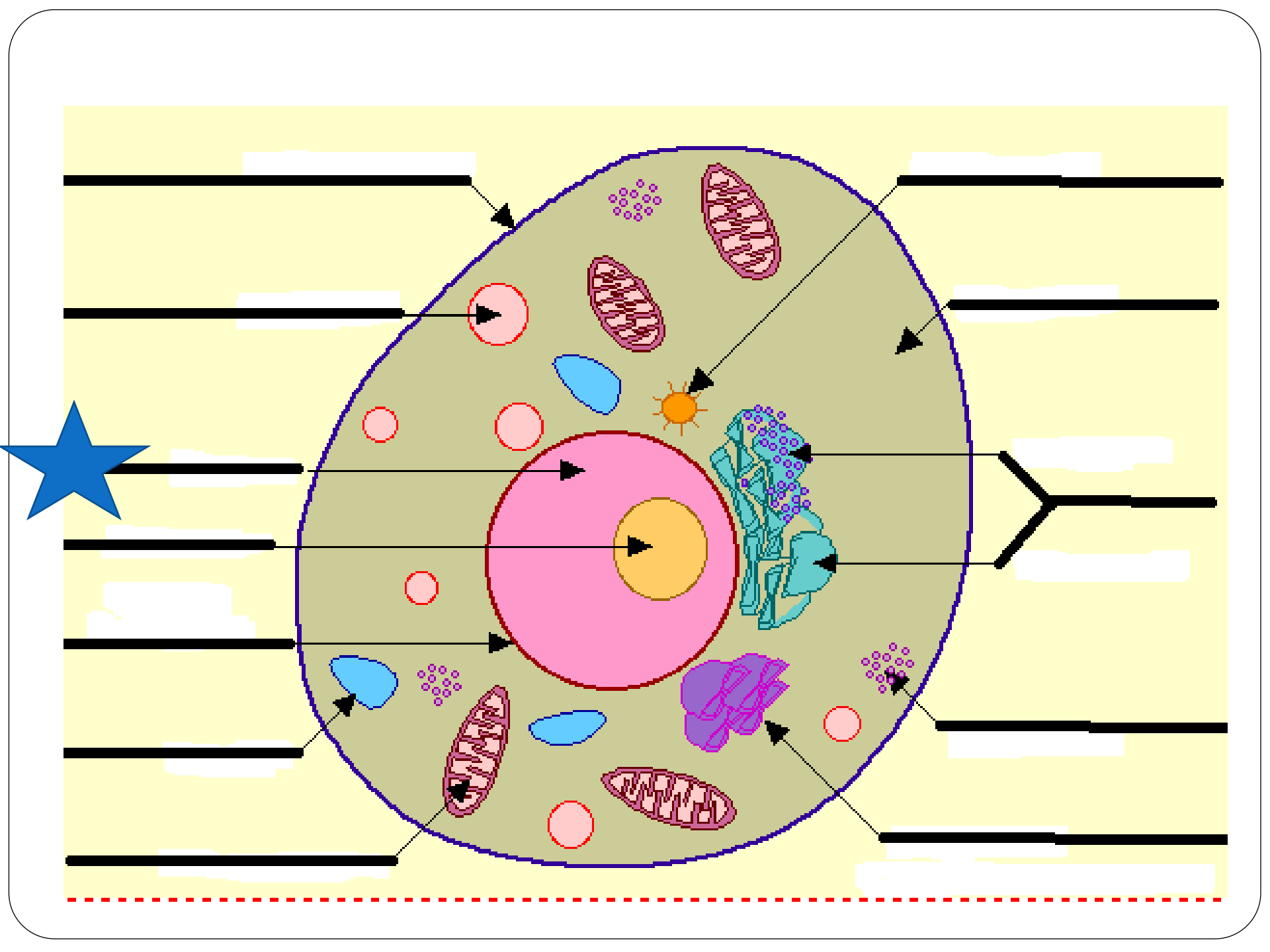
- cell structures that help a cell to function; located in the cytoplasm
- NOT ON THE WORKSHEET BUT STILL NEED TO KNOW 😊
- All of the following are Organelles



# Nucleus

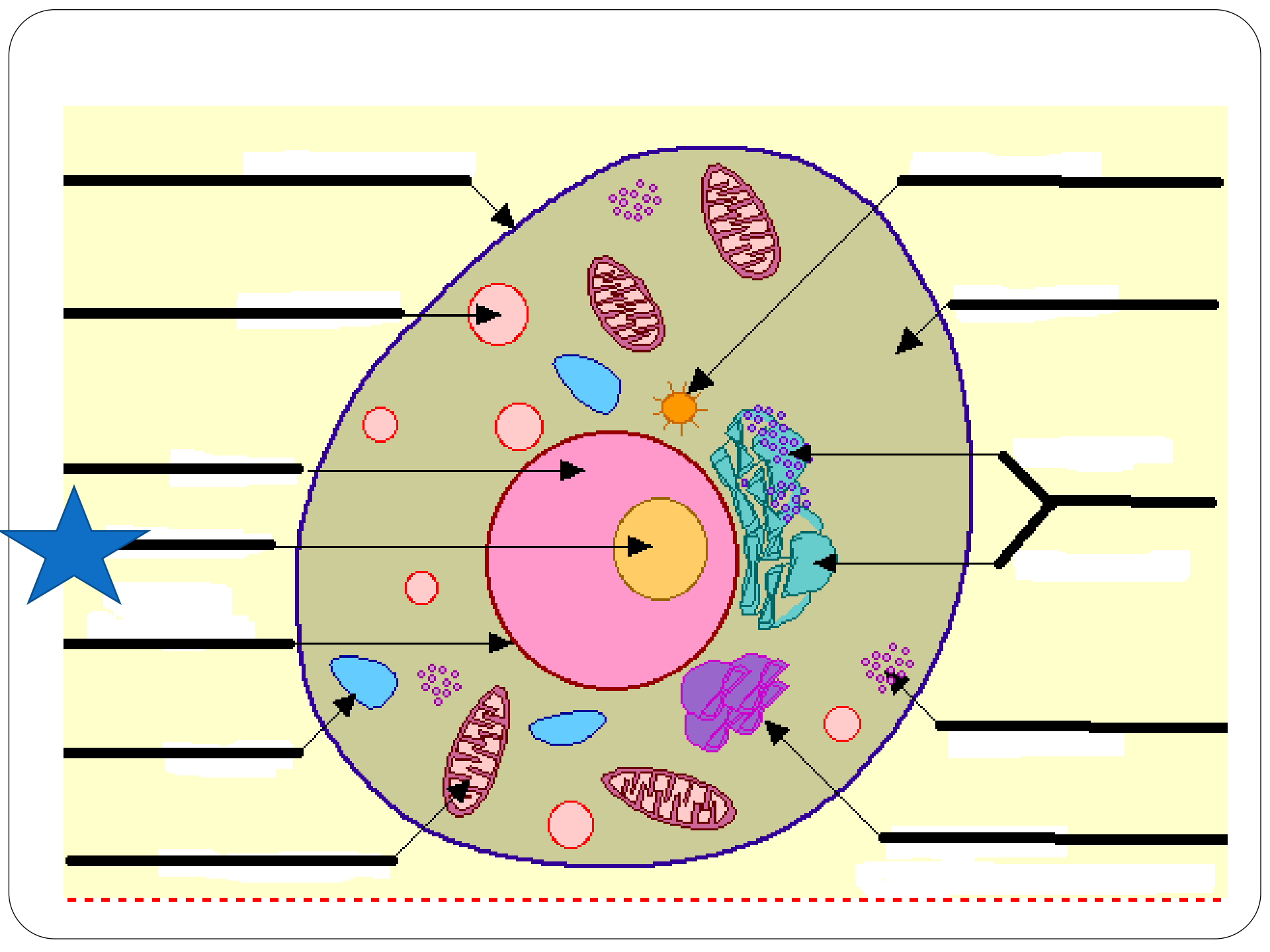
- - directs the activity of a cell; contains chromosomes with DNA.



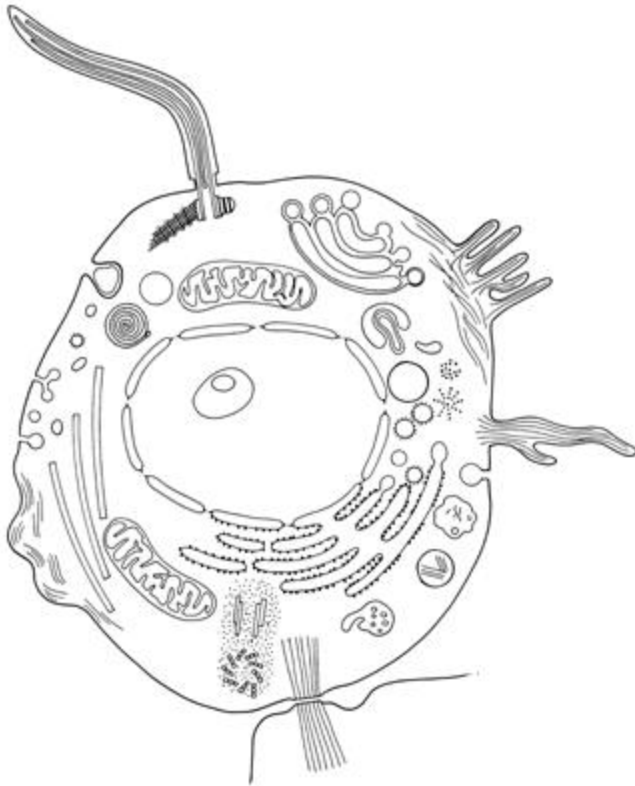


# Nucleolus

- located inside the nucleus; important in cell reproduction. Ribosomes are manufactured here.



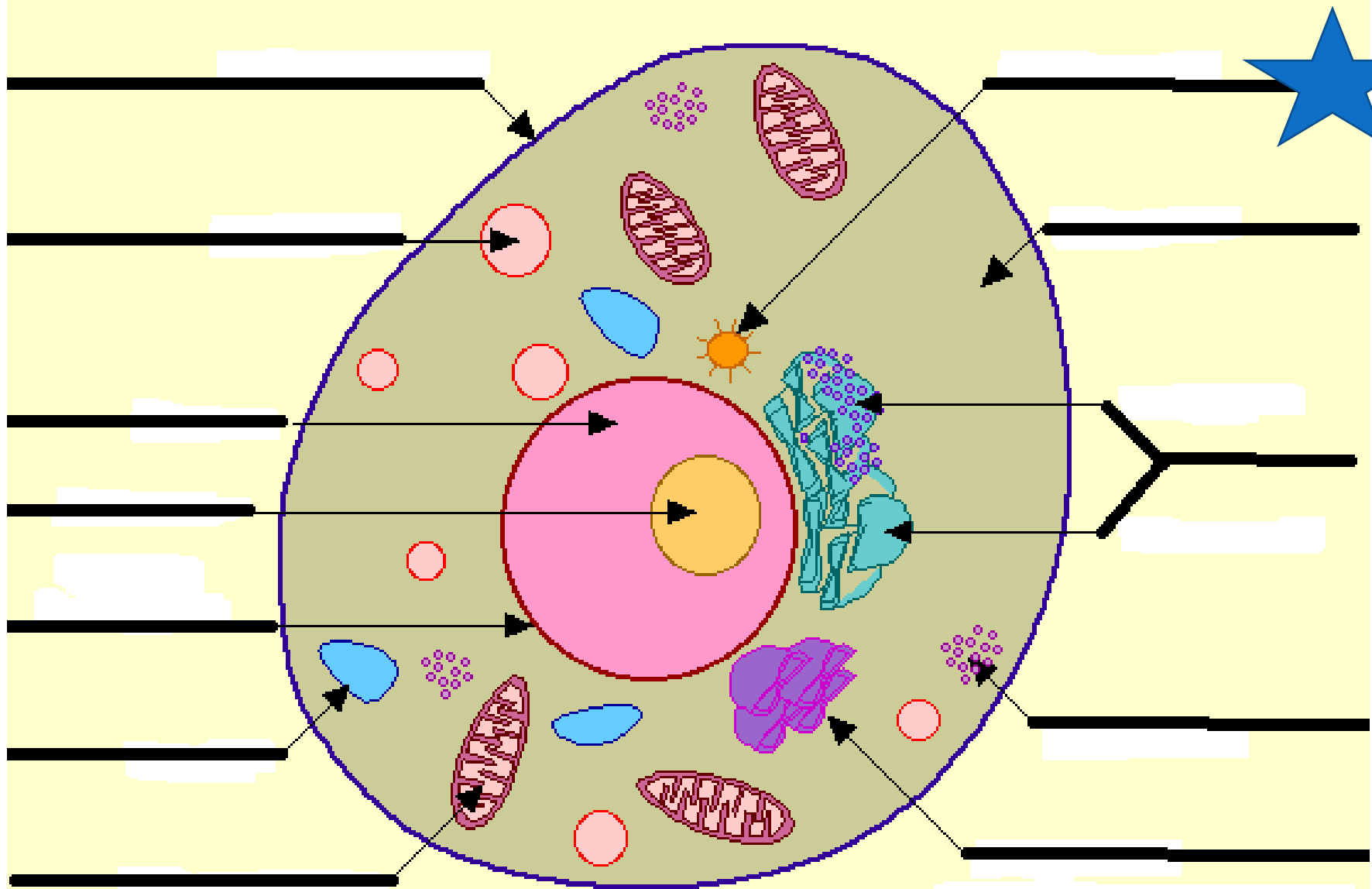
# Chromatin



- - located in the nucleus; made of DNA and protein. During cell production, the chromatin condenses to form rod-like structures called chromosomes.
- **NOT ON WORKSHEET BUT STILL NEED TO KNOW 😊**

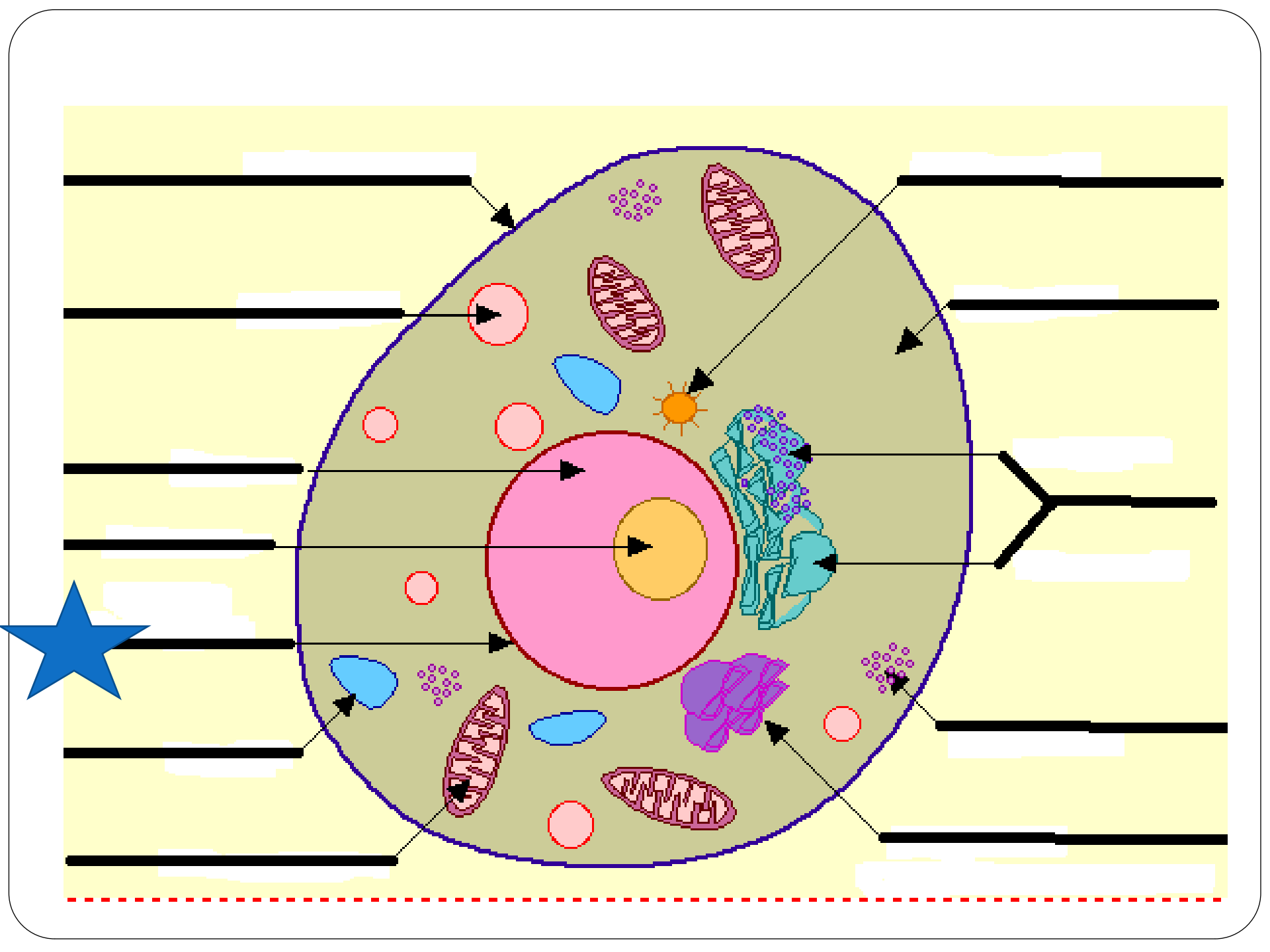
# Centrosome

- located in the cytoplasm near the nucleus; contains two centrioles which separate during mitosis to create an even division of chromosomes in the two new cells.



# Nuclear Membrane

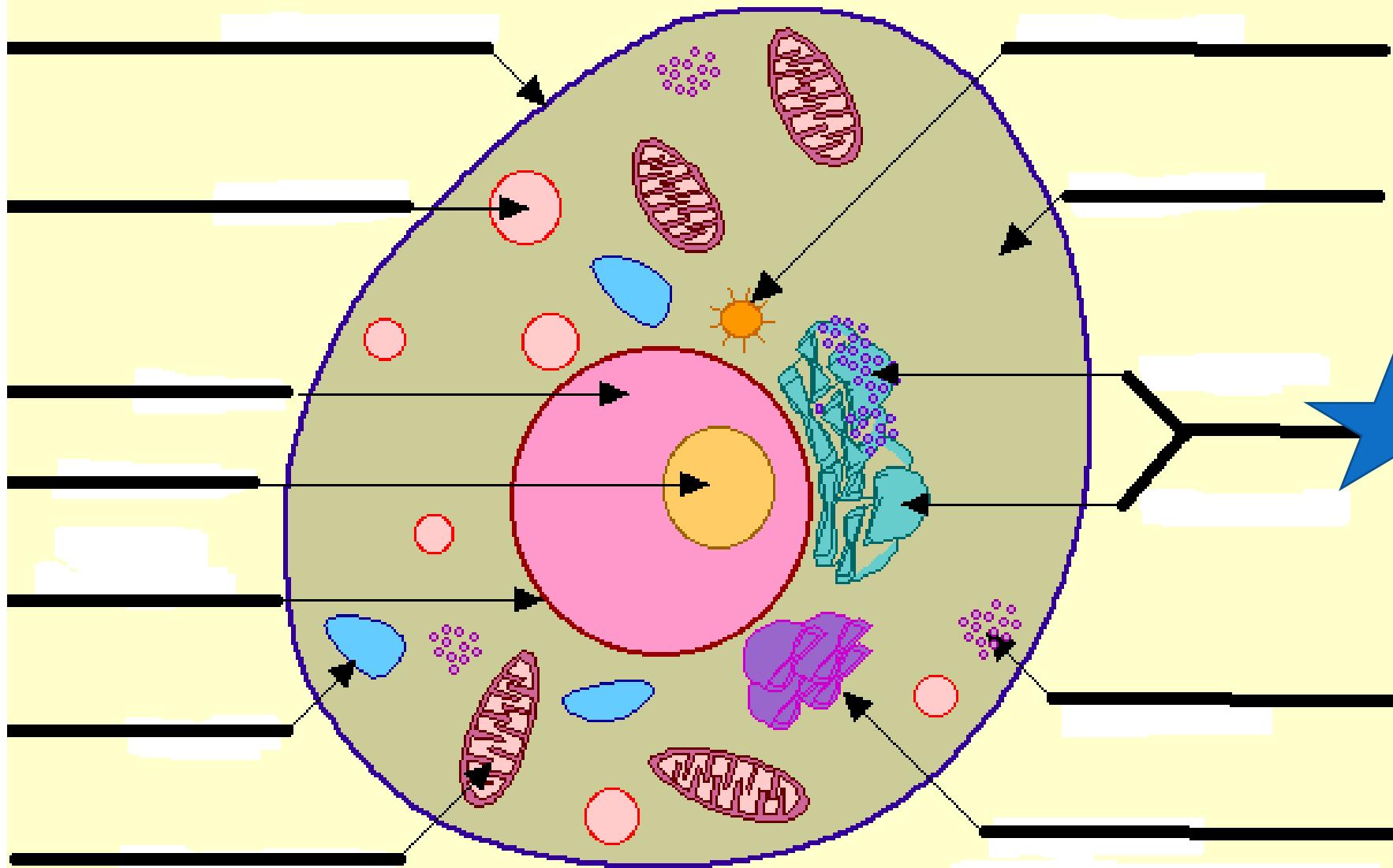
- separates the nucleus from the cytoplasm.





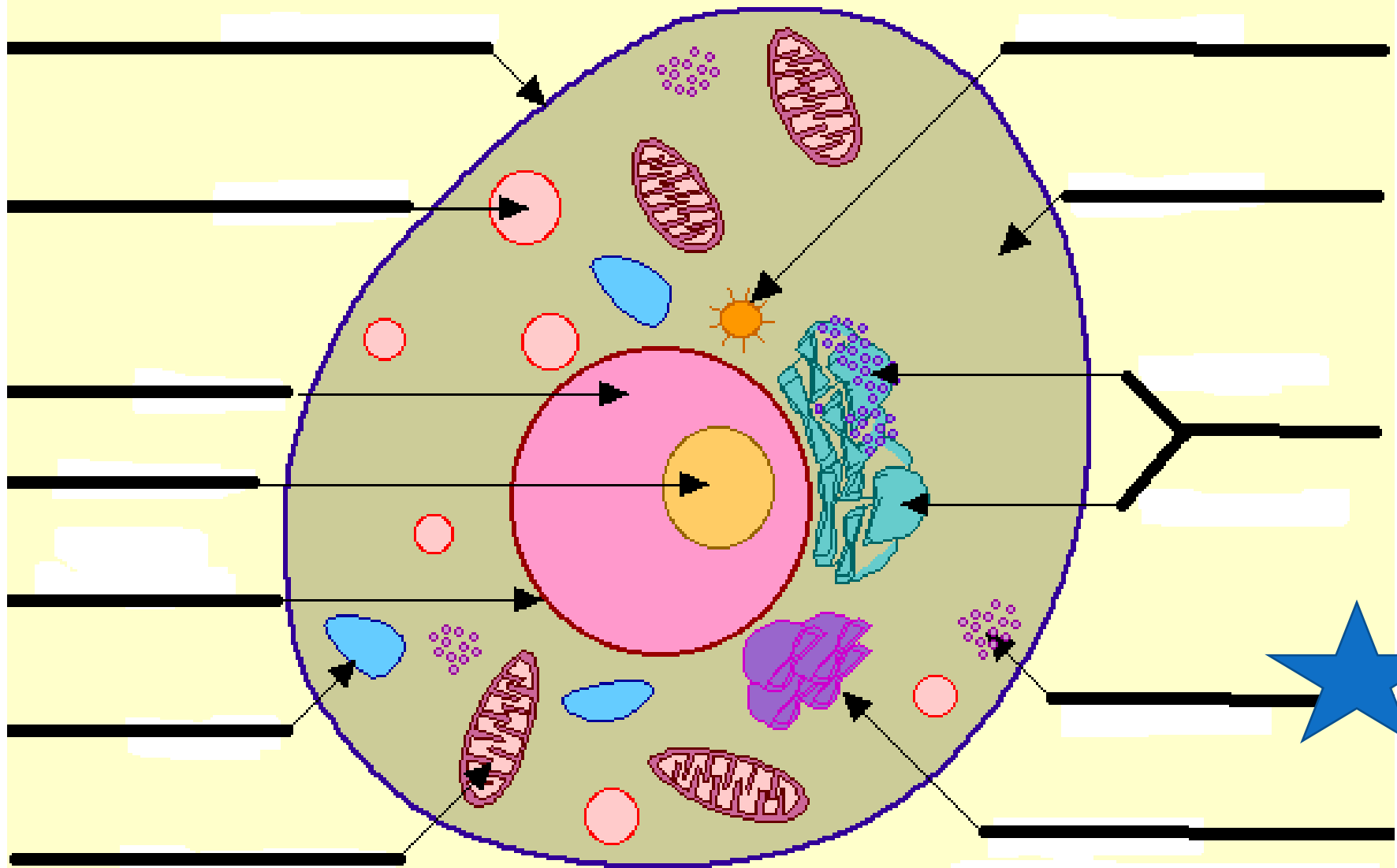
# Endoplasmic Reticulum

- moves materials around in the cell.



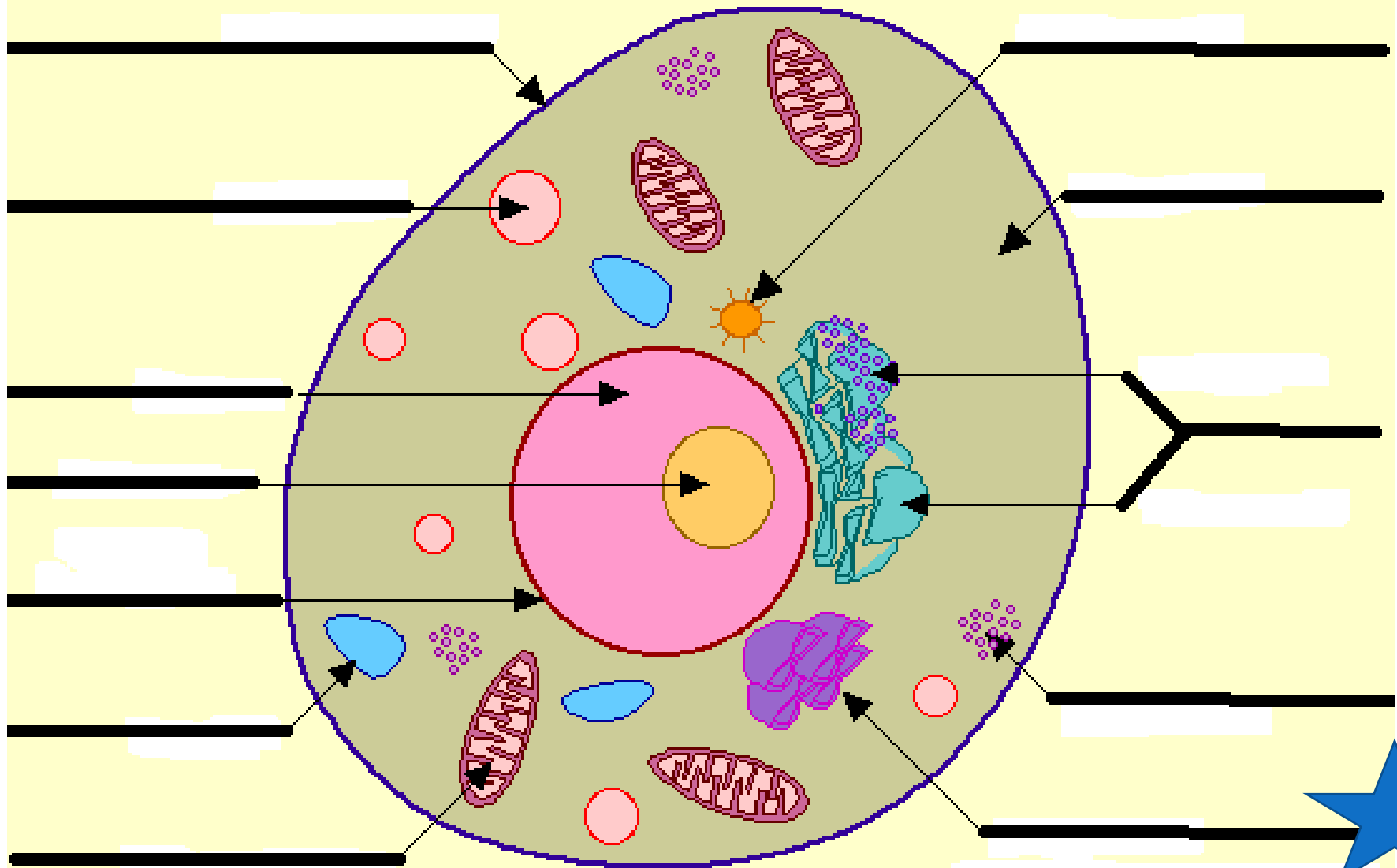
# Ribosomes

- make protein for the cell.



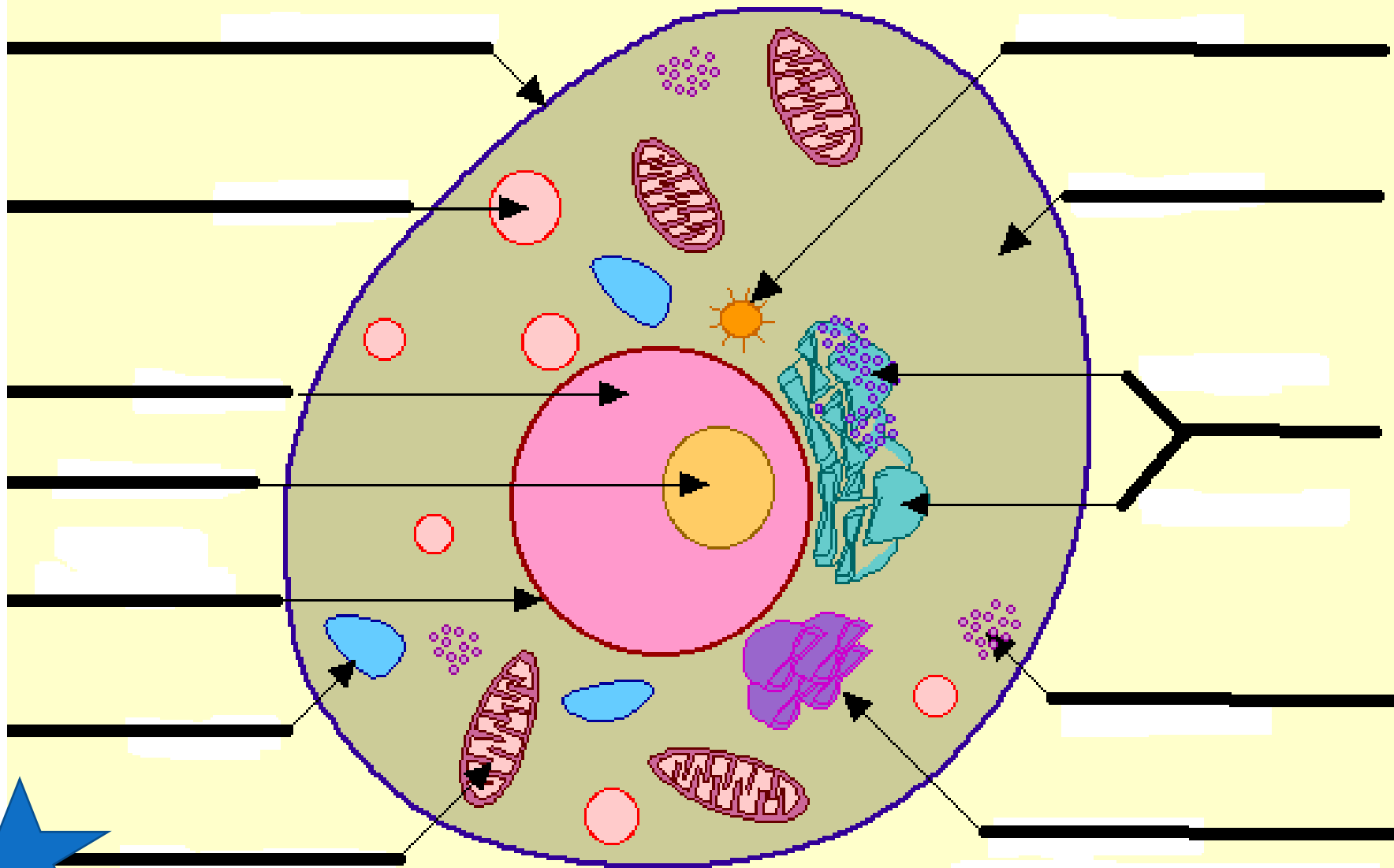
# Golgi Apparatus

- produces, stores, and packages secretions for discharge from the cell.



# Mitochondria

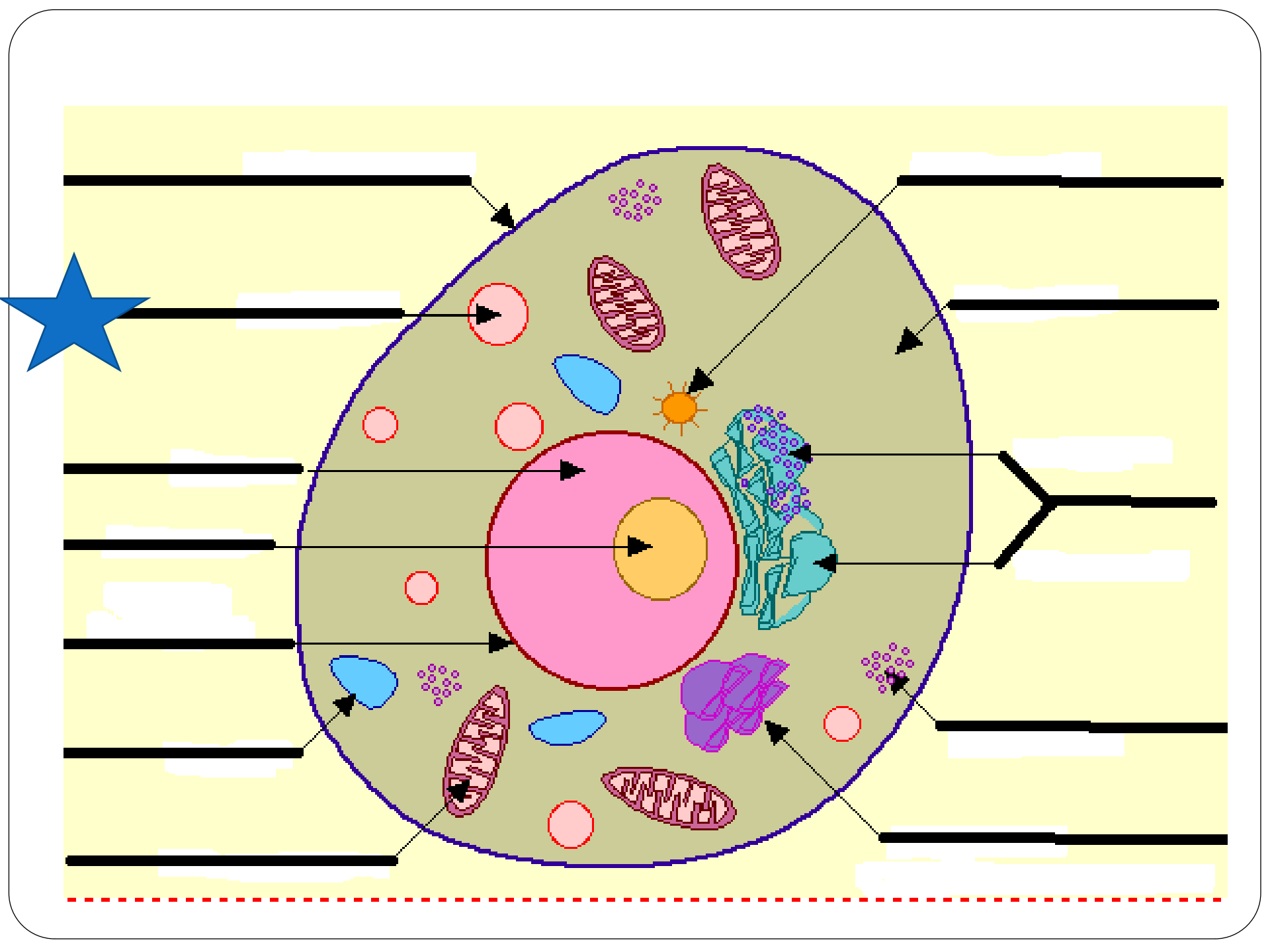
- break down food and release energy to the cell; often called the powerhouse of the cell.





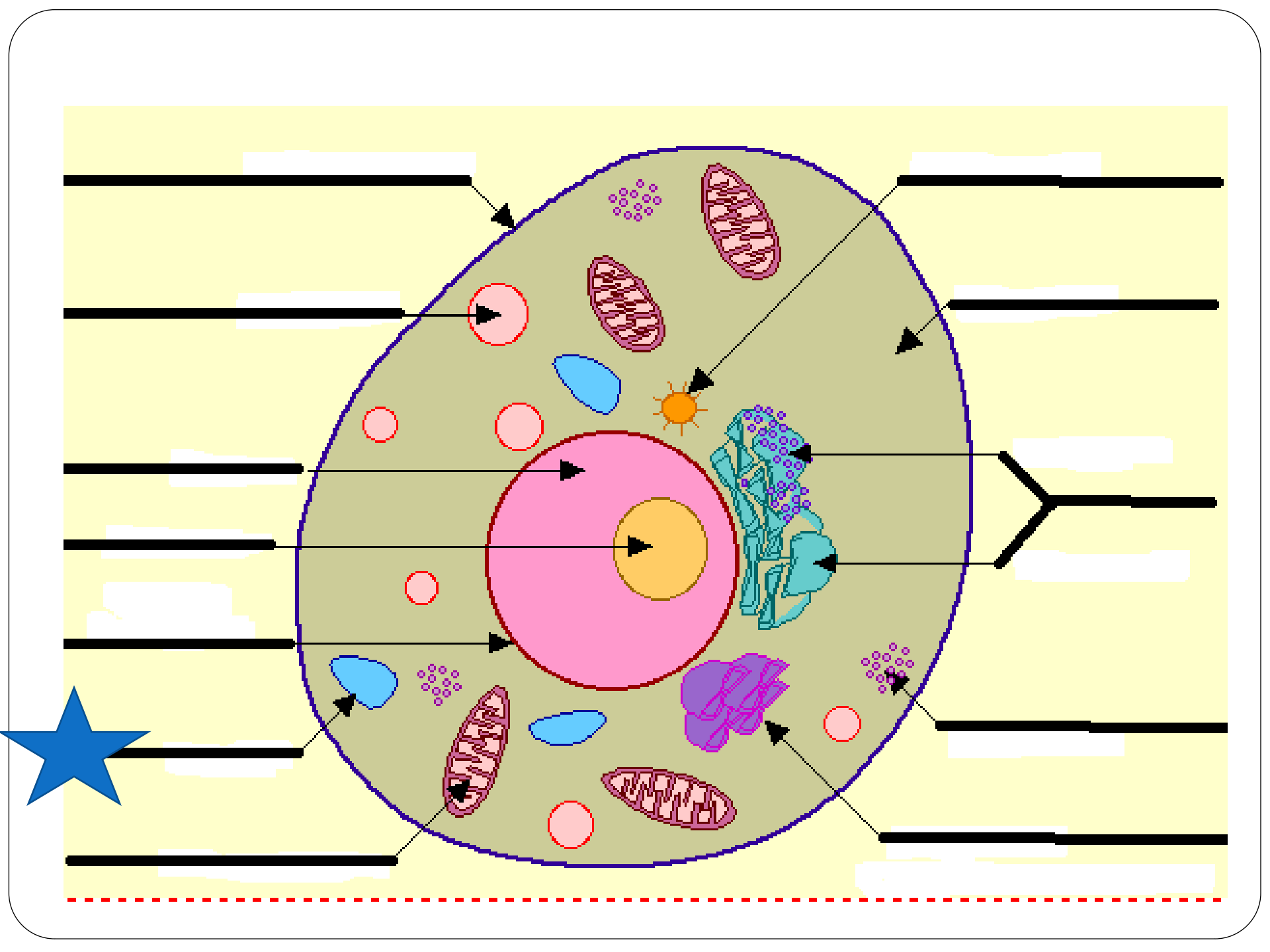
# Lysosomes

- Digest waste



# Vacuoles

- Storage areas for the cell



|                              |  |                         |  |
|------------------------------|--|-------------------------|--|
| <b>Cell Membrane</b>         |  | <b>Cytoplasm</b>        |  |
| <b>Organelles</b>            |  | <b>Nucleus</b>          |  |
| <b>Nucleolus</b>             |  | <b>Chromatin</b>        |  |
| <b>Centresome</b>            |  | <b>Nuclear Membrane</b> |  |
| <b>Endoplasmic Reticulum</b> |  | <b>Ribosomes</b>        |  |
| <b>Golgi Apparatus</b>       |  | <b>Mitochondria</b>     |  |
| <b>Lysosomes</b>             |  | <b>Vacuoles</b>         |  |

1

2

3

4

5

6

7

8

9

10

11

12

