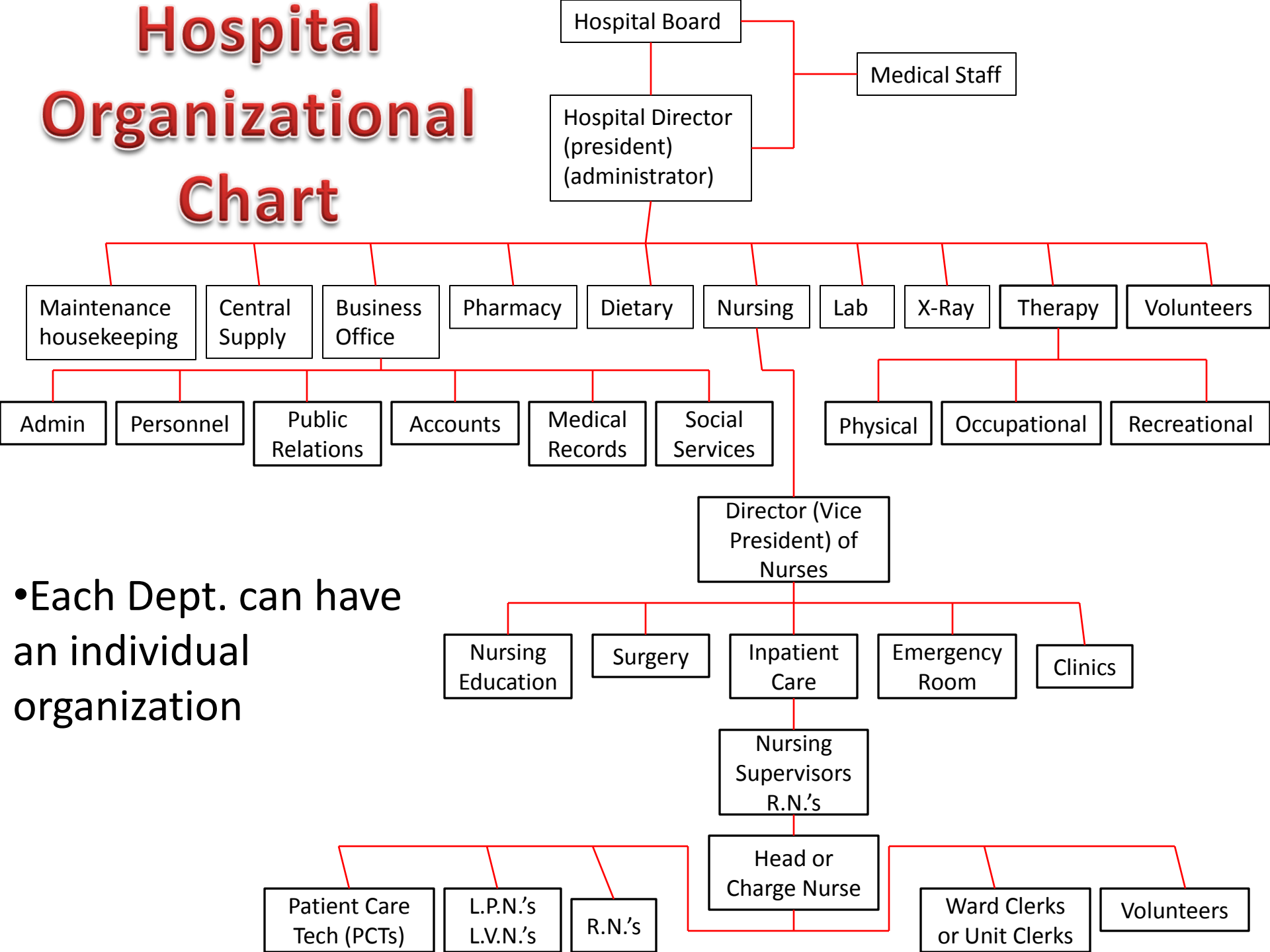


# **Health Care Organizational Structure**

# Organizational Structures

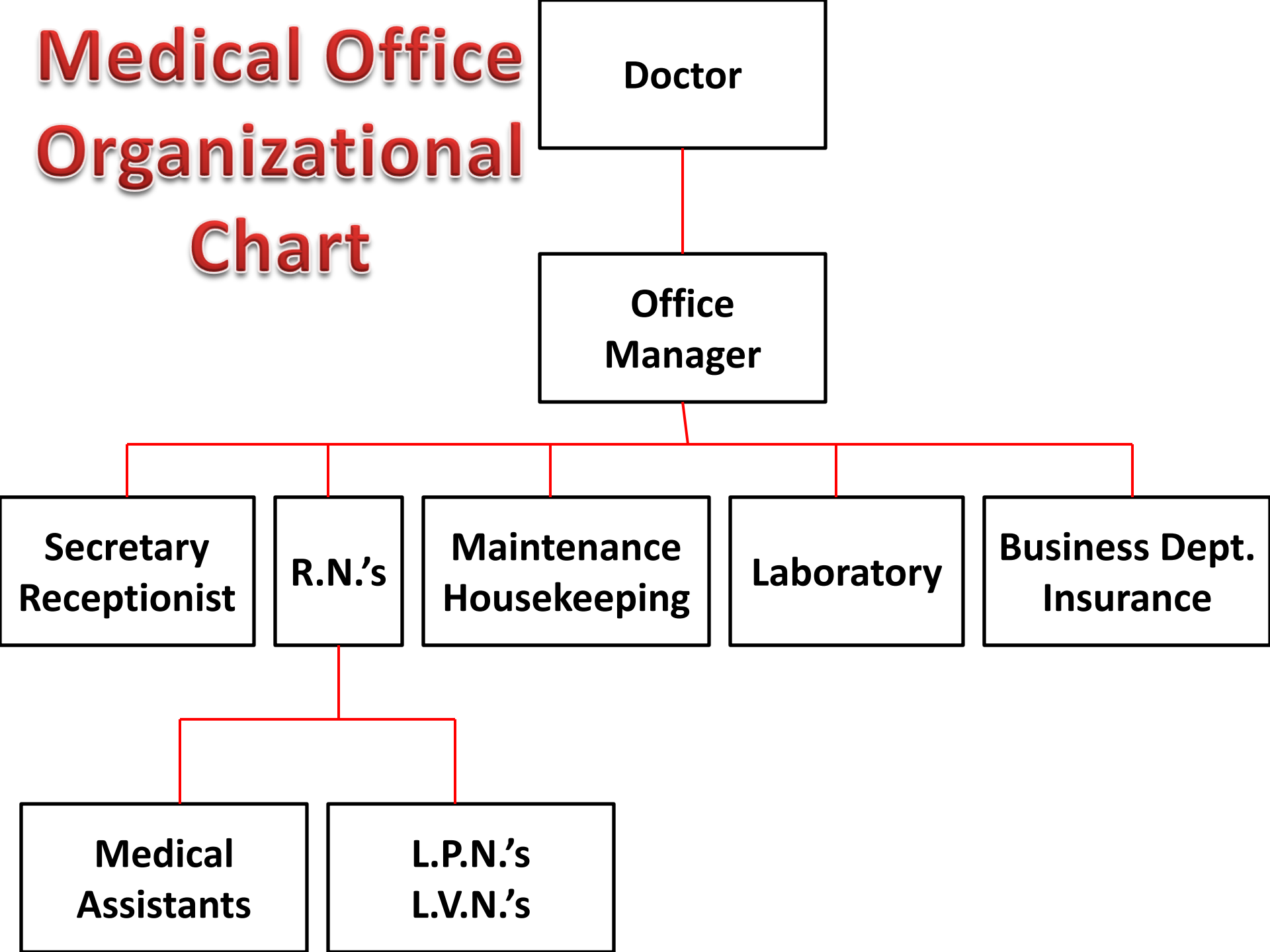
- Also know as **line of authority** or **chain of command**
  - Indicates areas of Responsibility
  - Leads to the most efficient operation of the facility
  - Can be complex in larger facilities or simple in smaller ones

# Hospital Organizational Chart



•Each Dept. can have an individual organization

# Medical Office Organizational Chart



- Both charts show lines of authority clearly
  - Health care workers MUST identify and understand their position in the facility's organizational structure
- Line of Authority
  - Workers take questions, reports, and problems to immediate supervision. If immediate supervisor cannot answer question or solve problem, the worker takes the situation to the next level in the chart

# Assignment!

- Design an organizational chart for the School, your place of employment, or another appropriate facility
- **DUE at the END OF CLASS!!!**