

Chapter 12

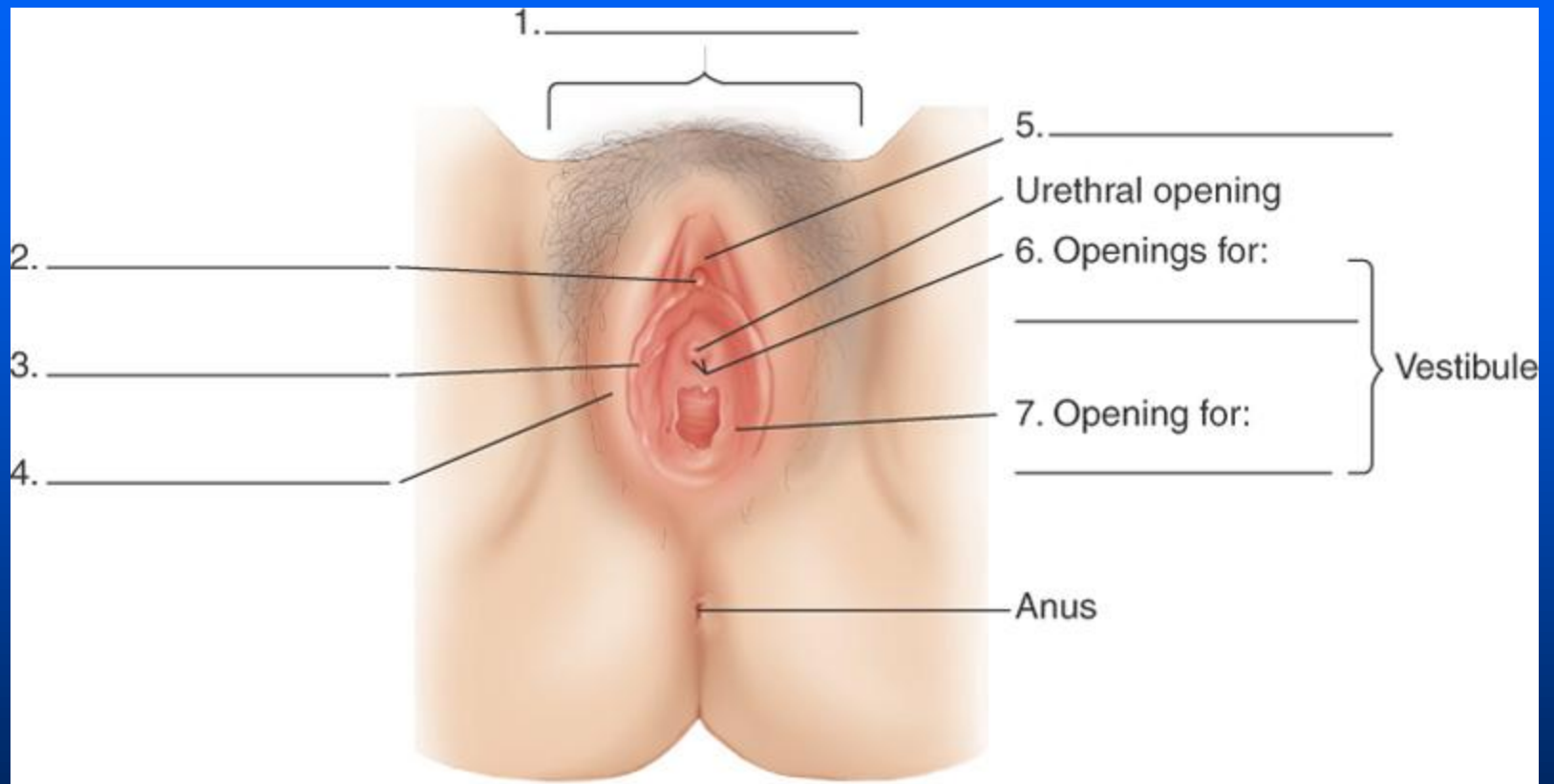
Reproductive System

Lesson 12.1 Female Reproductive System

1. State the function of the female reproductive system, and analyze associated terms.
2. Write the meanings of the word parts associated with the female reproductive system, and use the word parts to build and analyze terms.
3. Write the names of the structures of the female reproductive system when given their descriptions, define the terms associated with these structures and label the structures.
4. Sequence the reproductive cycle.
5. Write the names of the diagnostic tests and procedures for assessment of the female reproductive system when given descriptions of the procedures, or match the procedures with their descriptions.
6. Write the names of pathologies of the female reproductive system when given their descriptions, or match them with their descriptions.
7. Label uterine displacements.
8. Match surgical and therapeutic interventions for female reproductive system pathologies with descriptions of the interventions, or write the names of the interventions when given their descriptions.

Female Reproductive System

- gynecology (GYN, Gyn, gyn), gynecologic
- genitalia, external and internal
- urogenital, genitourinary (GU)



Word Parts: Female Reproductive System

genit(o)	organs of reproduction
oophor(o), ovari(o)	ovary
o(o)	egg (ovum)
salping(o)	fallopian tube
hyster(o), uter(o)	uterus
colp(o), vagin(o)	vagina

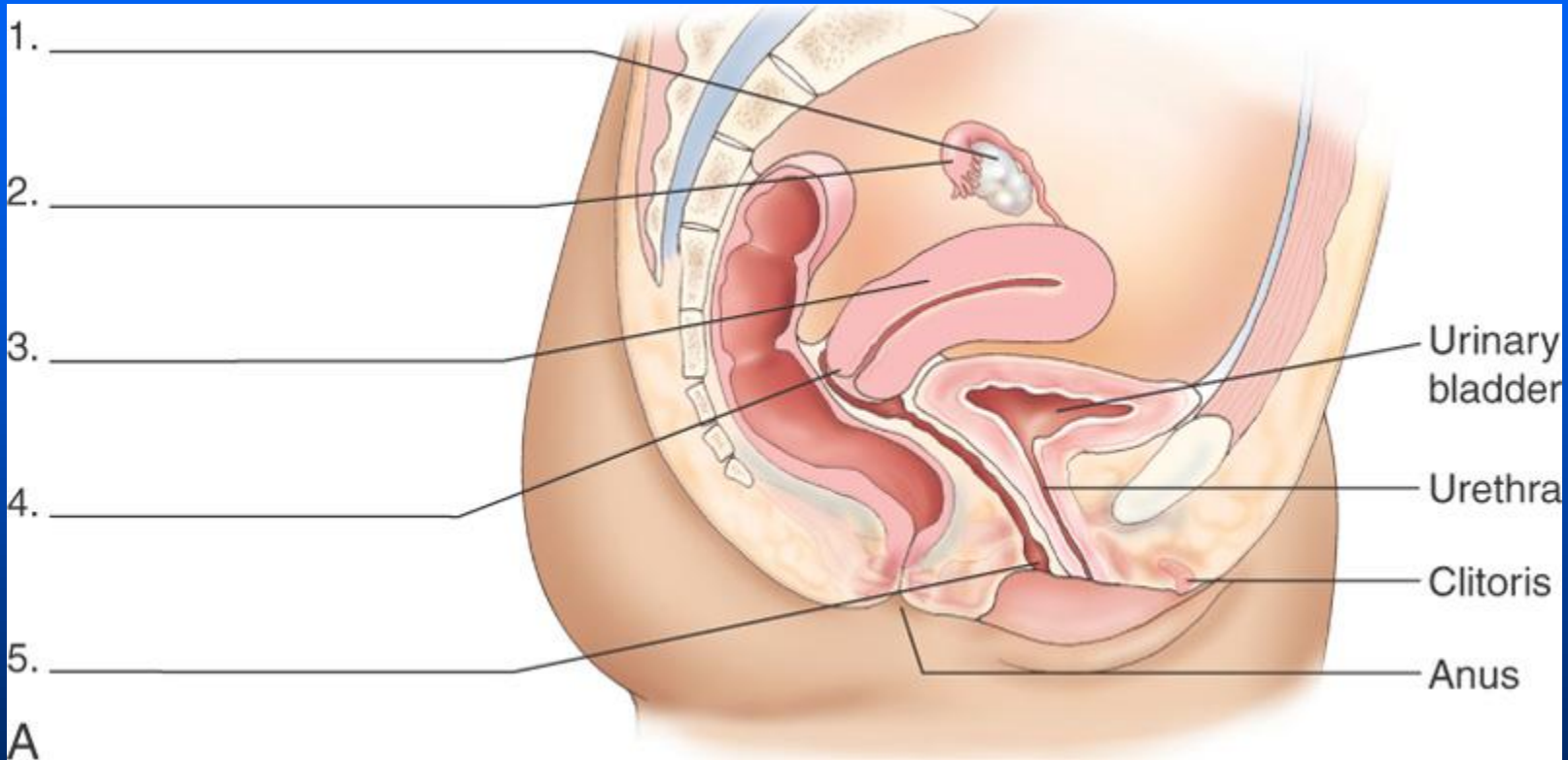
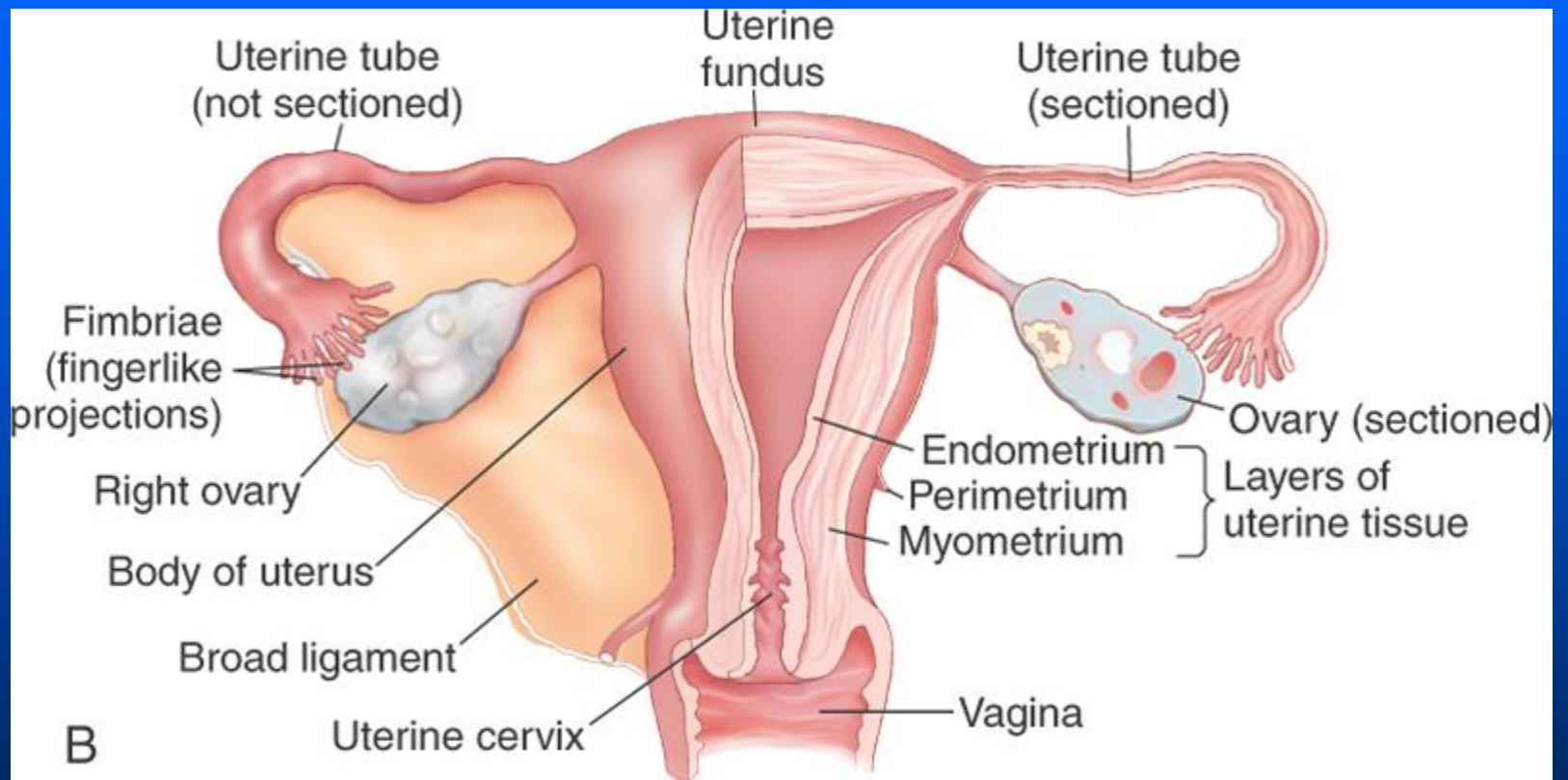


TABLE 12-1 The Female Genitalia

Internal Structures	External Structures (Vulva)
Left ovary and associated left uterine tube	Mons pubis
Right ovary and associated right uterine tube	Labia majora
Uterus	Labia minora
Vagina	Clitoris
Special glands	Prepuce
	Openings for glands



Word Parts: Female Reproductive System, (cont.)

metr(o)	measure, uterine tissue
perine(o)	perineum
vulv(o)	vulva
lapar(o)	abdominal wall
men(o)	month
top(o)	place or position

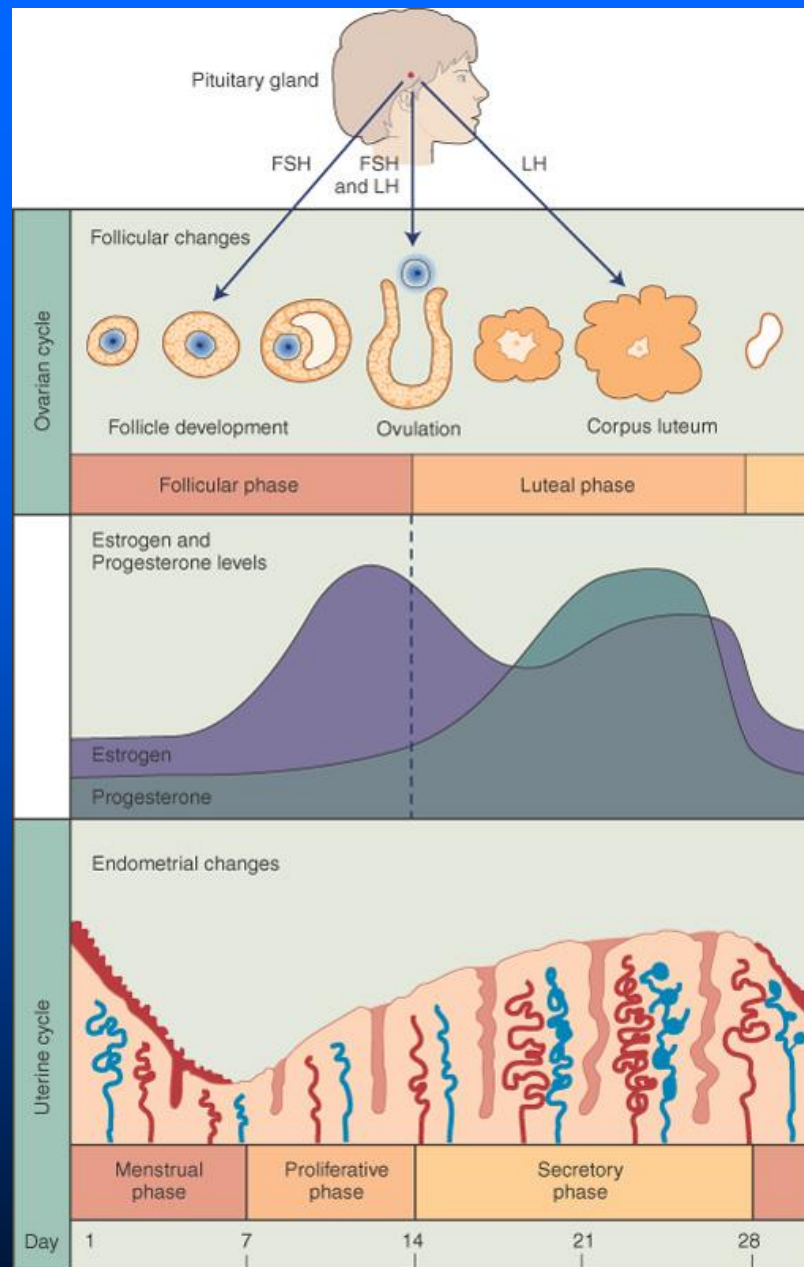
Terminology: Ovarian and Uterine Cycles

- menstrual cycle, ovarian cycle
- menarche, puberty
- menopause, climacteric
- menstruation

Quick Quiz!

Which of the following is the first onset of menstruation?

- a. ovarian cycle
- b. menarche
- c. climacteric
- d. ovulation

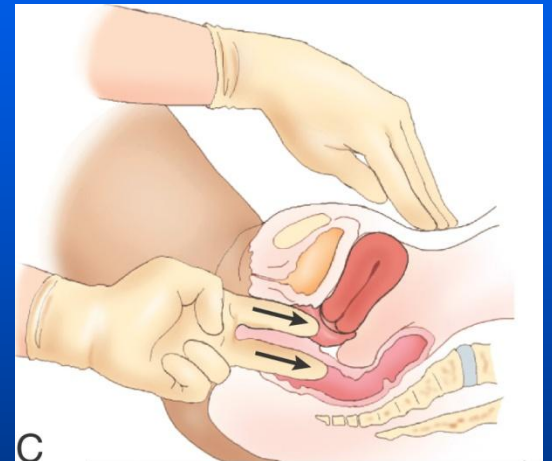
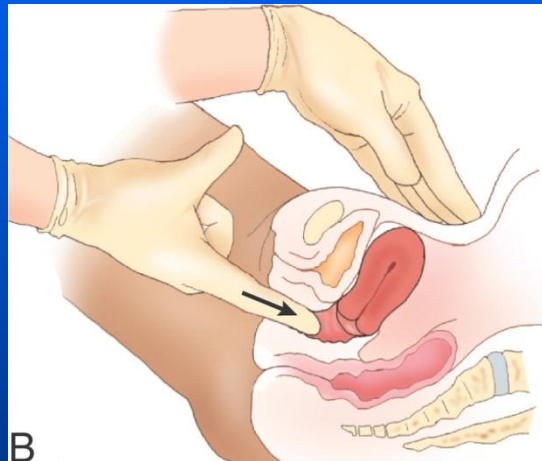
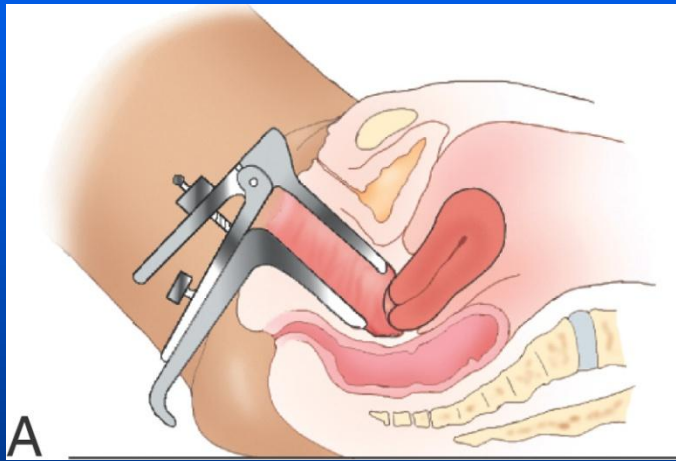


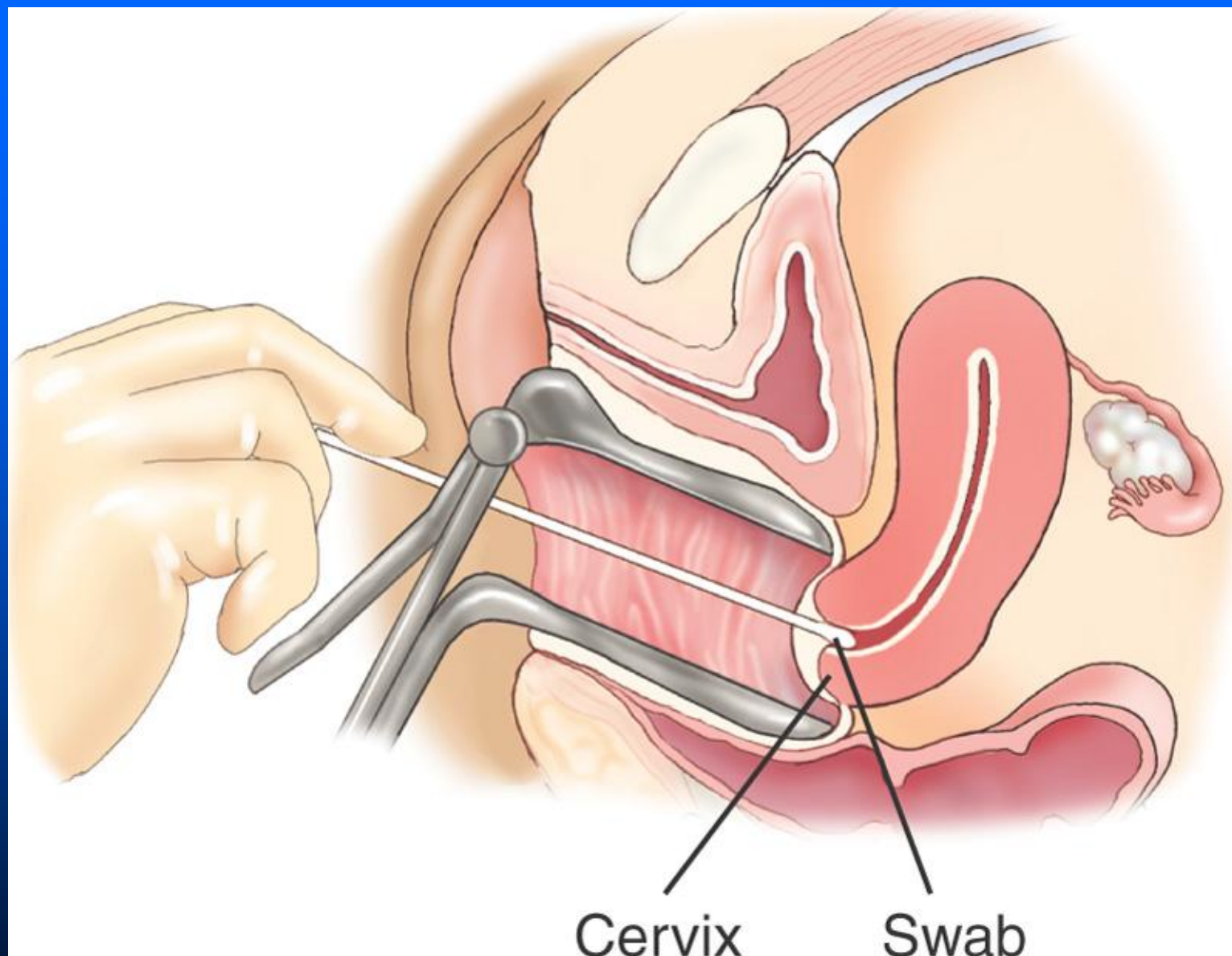
Terminology: Ovarian and Uterine Cycles, (cont.)

- estrogen, progesterone
- oogenesis
- ovulation
- menses

TABLE 12-2 The Reproductive Cycle

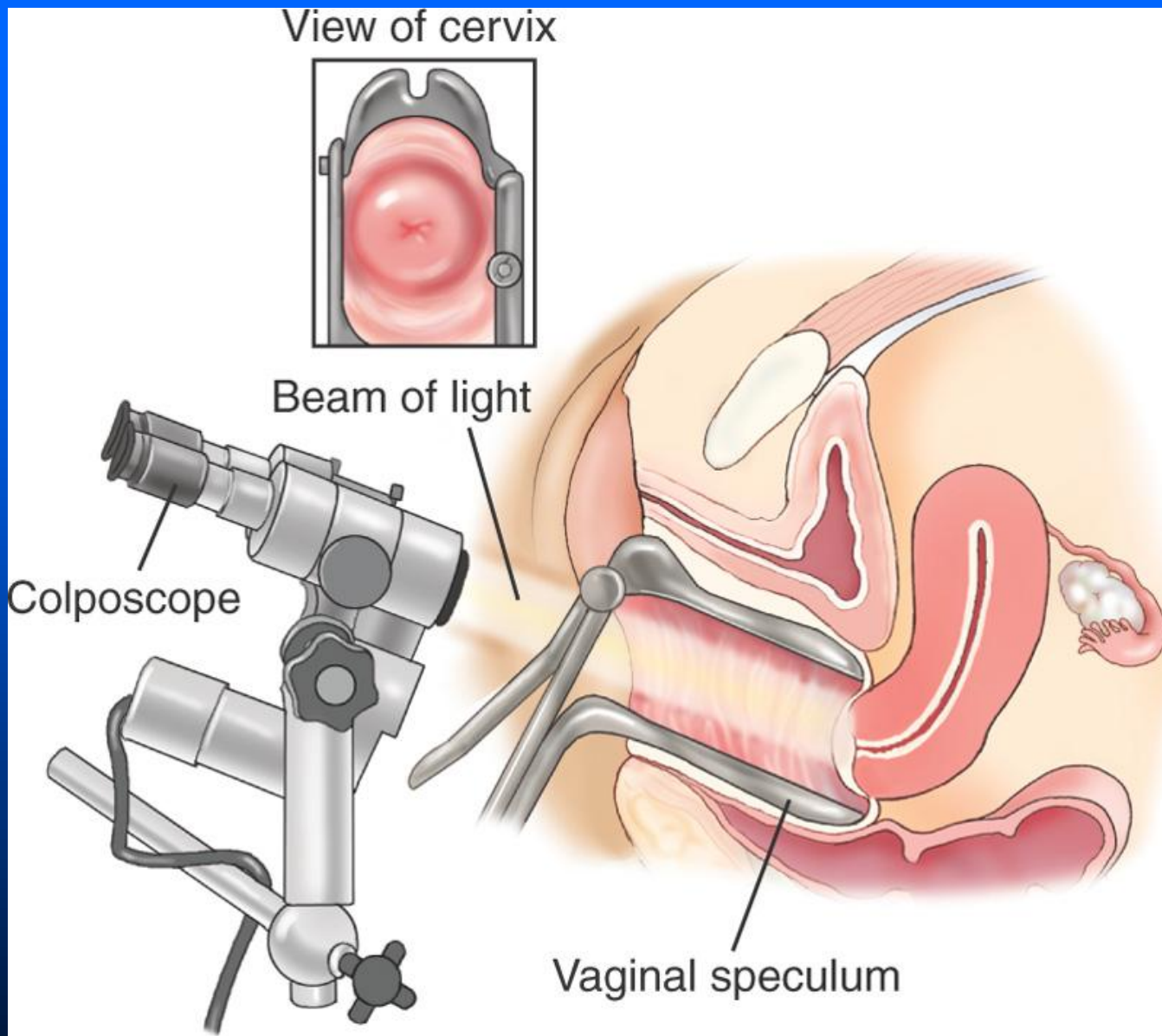
Days	Ovarian Phase	Uterine (Menstrual) Phase
1-5	Follicular phase. Growth of the follicle. Secretion of estrogen.	Menses. Blood is shed from the vagina.
6-12	Follicular phase continues.	Proliferative phase. Growth of the endometrium.
13-14	Ovulation. Ovum is released by the follicle.	Proliferative phase continues.
15-28	Luteal phase. Follicle becomes corpus luteum. Secretes progesterone.	Secretory phase. Continued growth of endometrium, secretion of glycogen.





Diagnostic Tests and Procedures: Female Reproductive System

- vaginal speculum, bimanual examination, rectovaginal examination
- Pap smear, Papanicolaou test
- cytology, endometrial biopsy
- dysplasia
- *Trichomonas*, gonorrhea



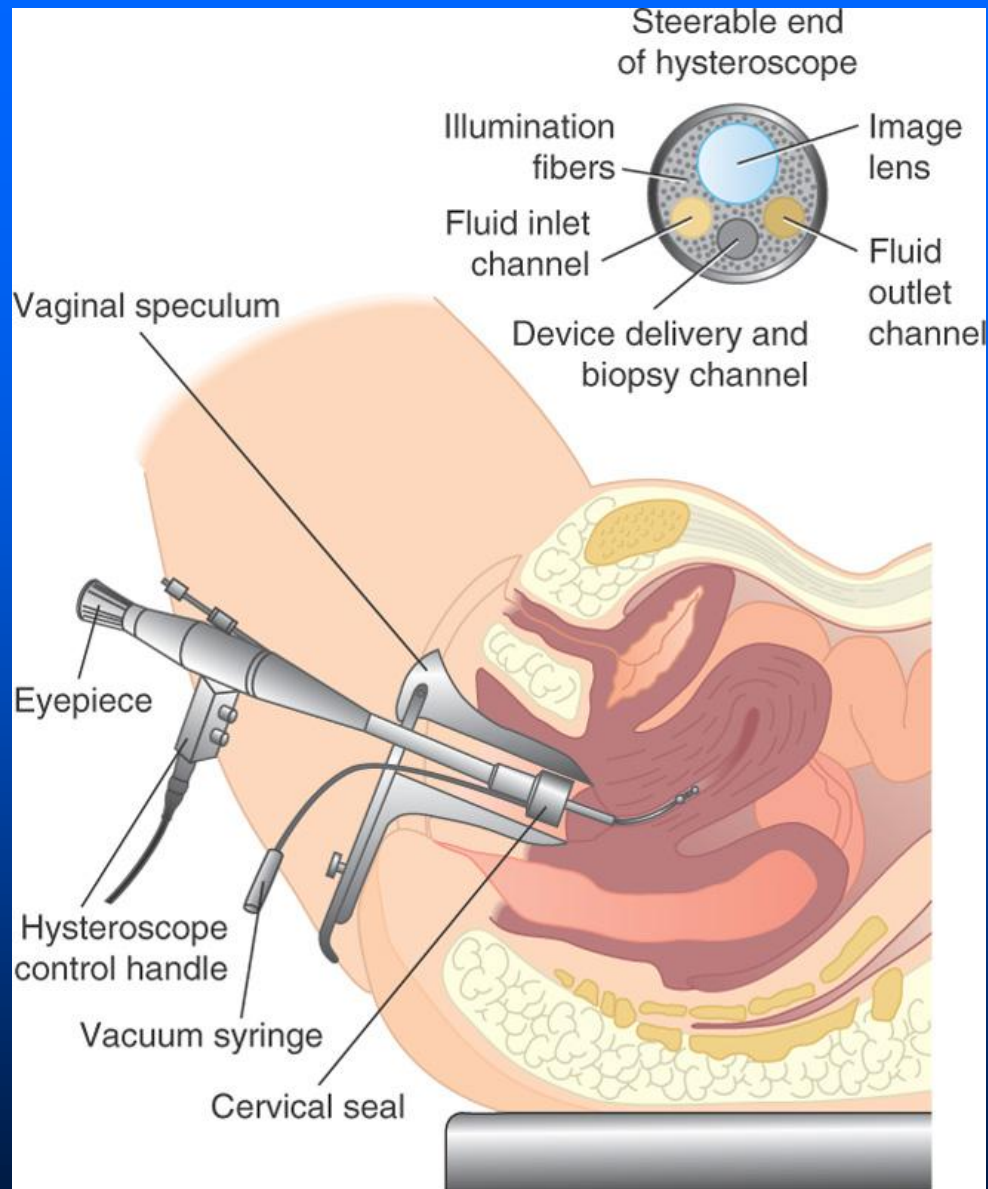


Figure 12-7 From Black JM, Hawks JH: Medical-Surgical Nursing, ed 8, 2009, Saunders.

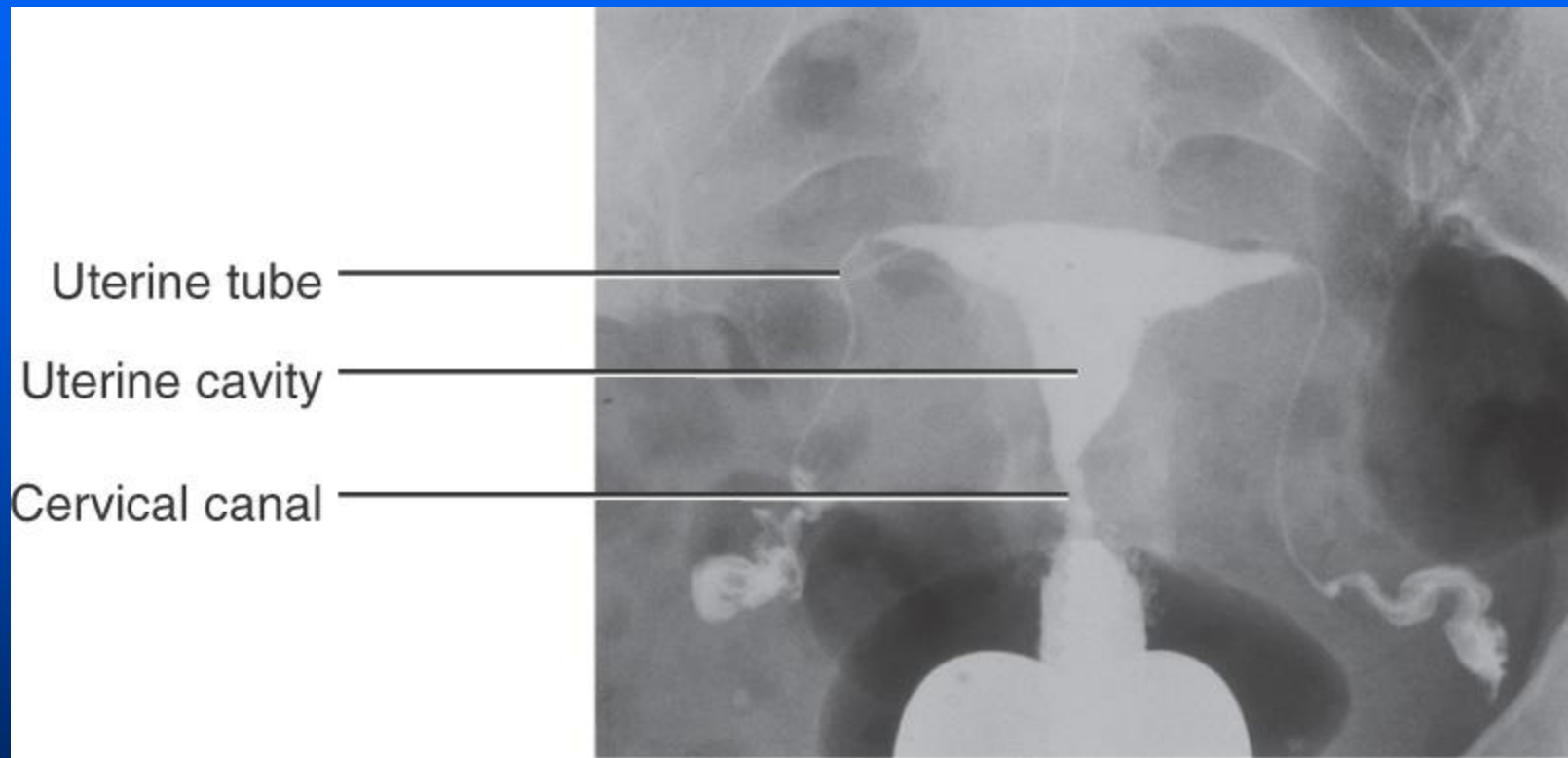
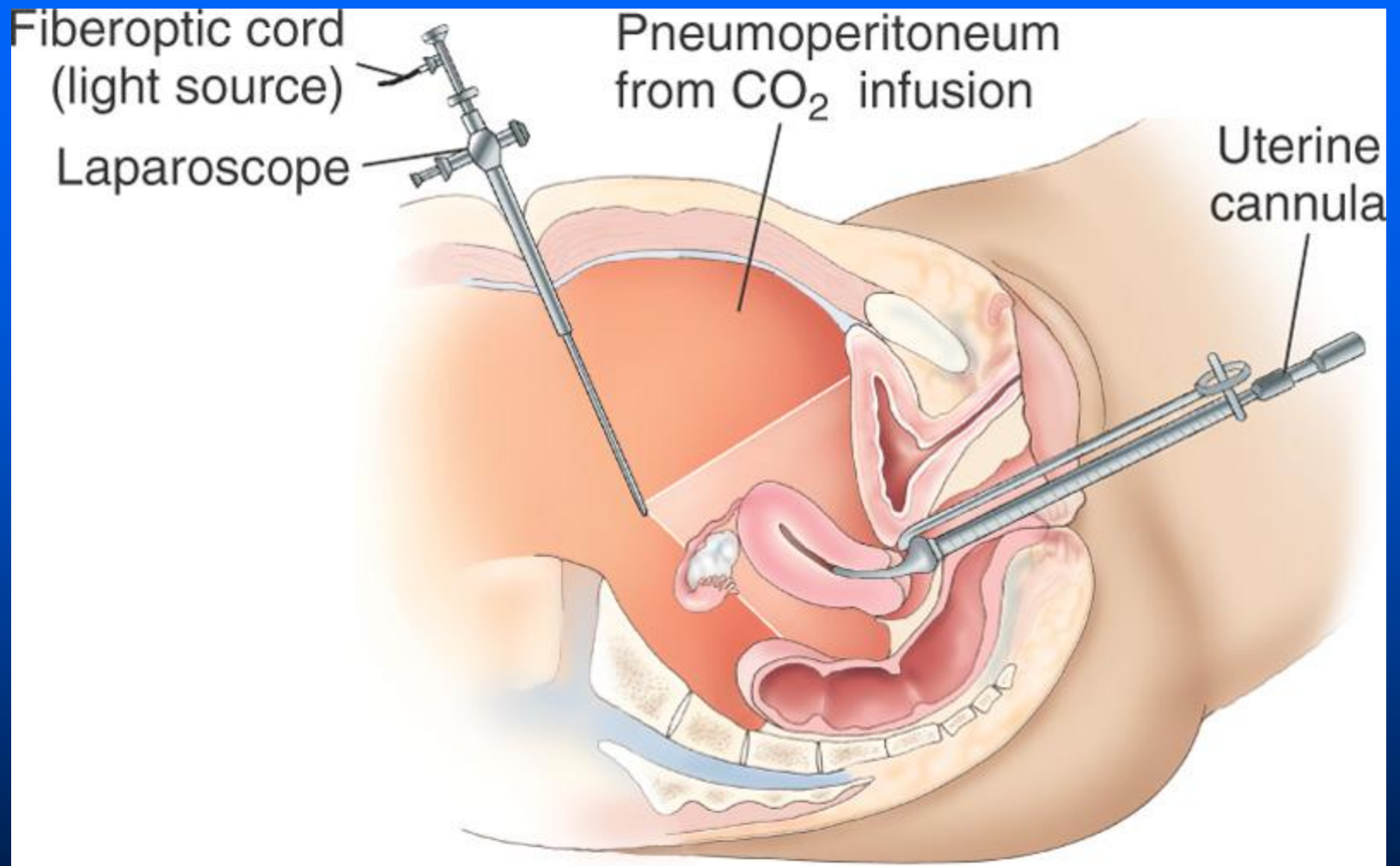


Figure 12-8 From Greer I, Cameron I, Kitchner H, Prentice A: Mosby's Color Atlas and Text of Obstetrics and Gynecology, 2001, Mosby Ltd.

Diagnostic Tests and Procedures: Female Reproductive System, (cont.)

- colposcopy, colposcope, hysteroscopy, hysteroscope
- cervical biopsy
- hysterosalpingography, hysterosalpingogram
- VDRL, rapid plasma reagin
- blood hormone levels, human chorionic gonadotropin
- pelvic ultrasonography, computed tomography



Pathologies: Female Reproductive System

- Menstrual Disorders:
 - menorrhagia, menorrhagia
 - metrorrhagia
 - amenorrhagia, dysmenorrhagia
 - premenstrual syndrome

Pathologies: Female Reproductive System, (cont.)

- Infections and Inflammation:
 - cervicitis
 - sexually transmitted diseases, gonorrhea
 - vaginitis, colpitis
 - vulvitis, vulvovaginitis, candidiasis
 - endometritis, myometritis, pelvic inflammatory disease

Pathologies: Female Reproductive System, (cont.)

- Ovarian disorders:
 - oophoritis, oophorosalingitis
 - oophoropathy
 - oophoralgia, mittelschmerz
 - anovulation, polycystic ovary syndrome, ovarian cyst
 - ovarian cancer

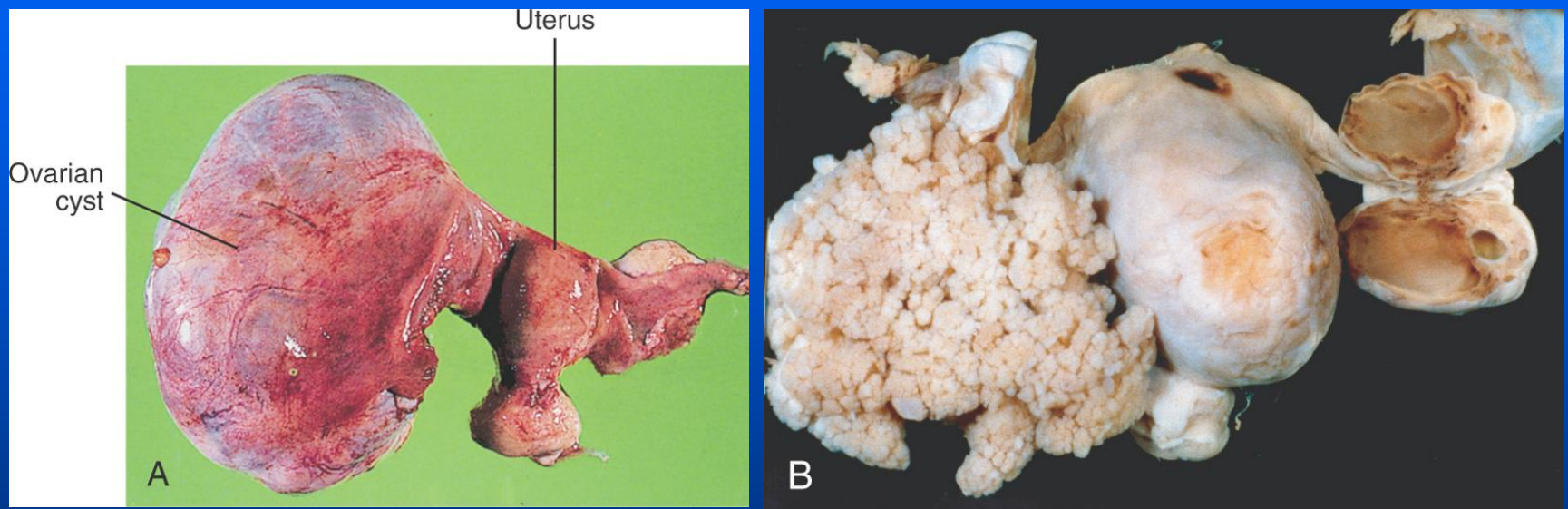


Figure 12-10A From Symonds EM, MacPherson MBA: Color Atlas of Obstetrics and Gynecology, London, 1994, Mosby-Wolfe.

Figure 12-10B Courtesy the Royal College of Obstetricians and Gynaecologists.

Pathologies: Female Reproductive System, (cont.)

- salpingocele, salpingitis
- ectopic pregnancy, tubal pregnancy
- septicemia, toxic shock syndrome
- uterine leiomyoma, cervical polyps
- hysteropathy
- uterine cancer

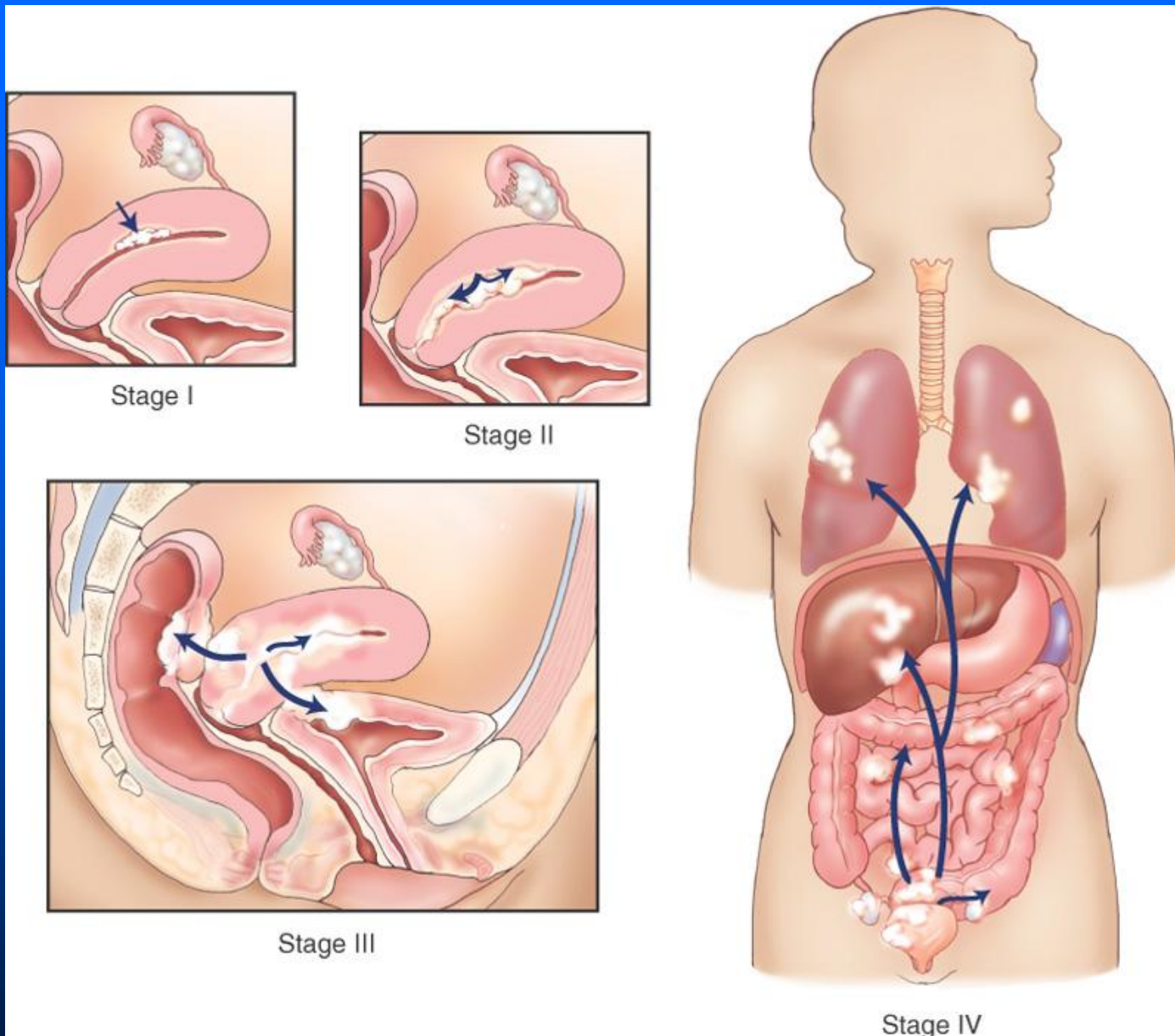
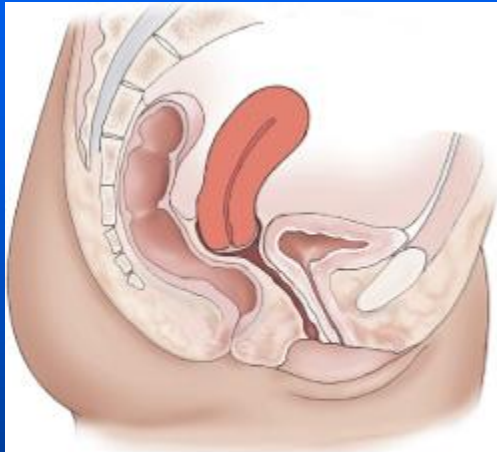


Figure 12-11 From Polaski AL, Tatro SE: *Luckmann's core principles and practice of medical-surgical nursing*, Philadelphia, 1996, Saunders.

Quick Quiz!

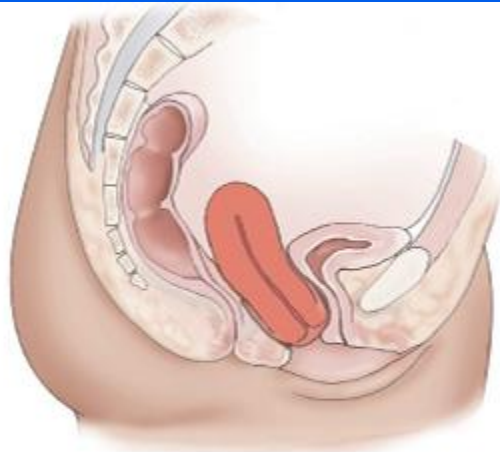
Which term means a fertilized ovum implanted somewhere outside the uterine cavity?

- a. endometritis
- b. hysterosalpingogram
- c. dysplasia
- d. ectopic pregnancy



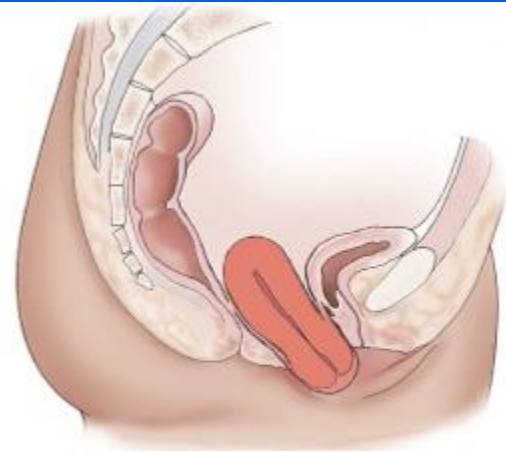
1st degree uterine prolapse

A



2nd degree uterine prolapse

B

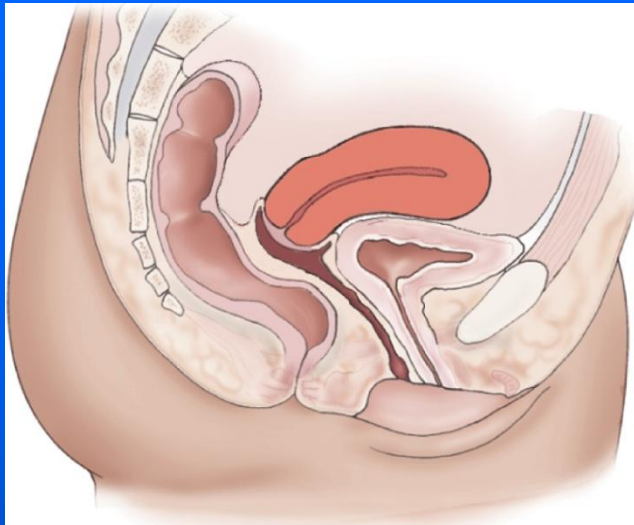


3rd degree uterine prolapse

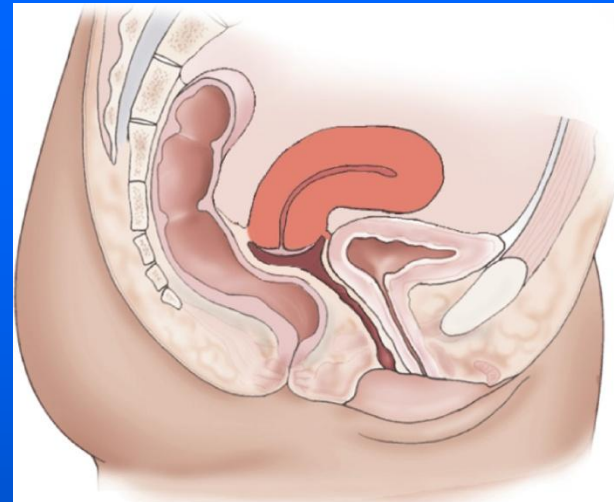
C

Pathologies: Female Reproductive System, (cont.)

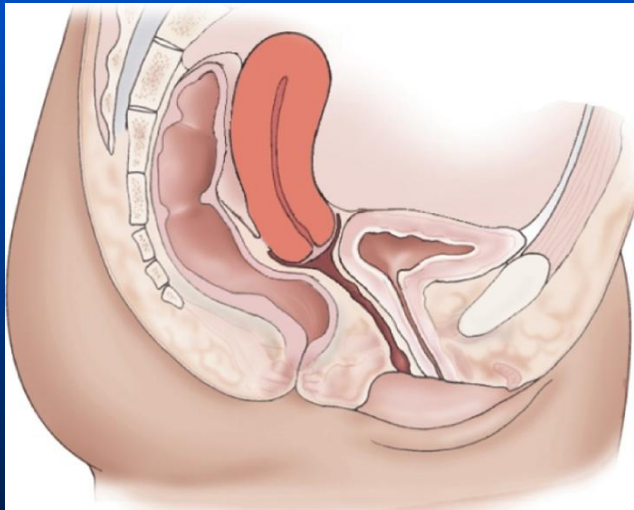
- hysteroptosis, prolapse
- Uterine displacements:
 - anteversion, retroversion
 - anteflexion, retroflexion



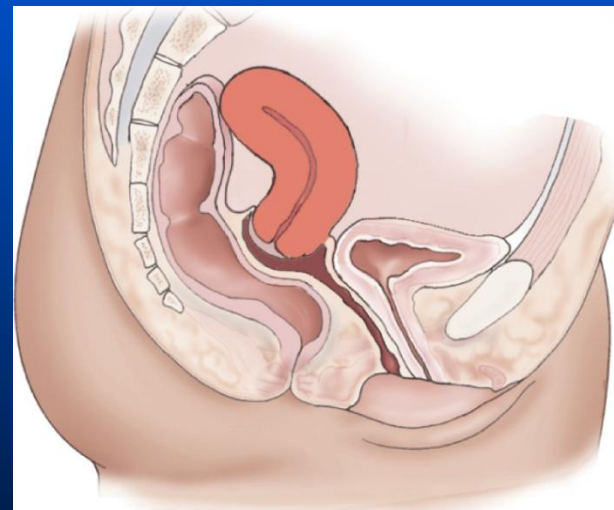
A Anteversion



C Anteflexion



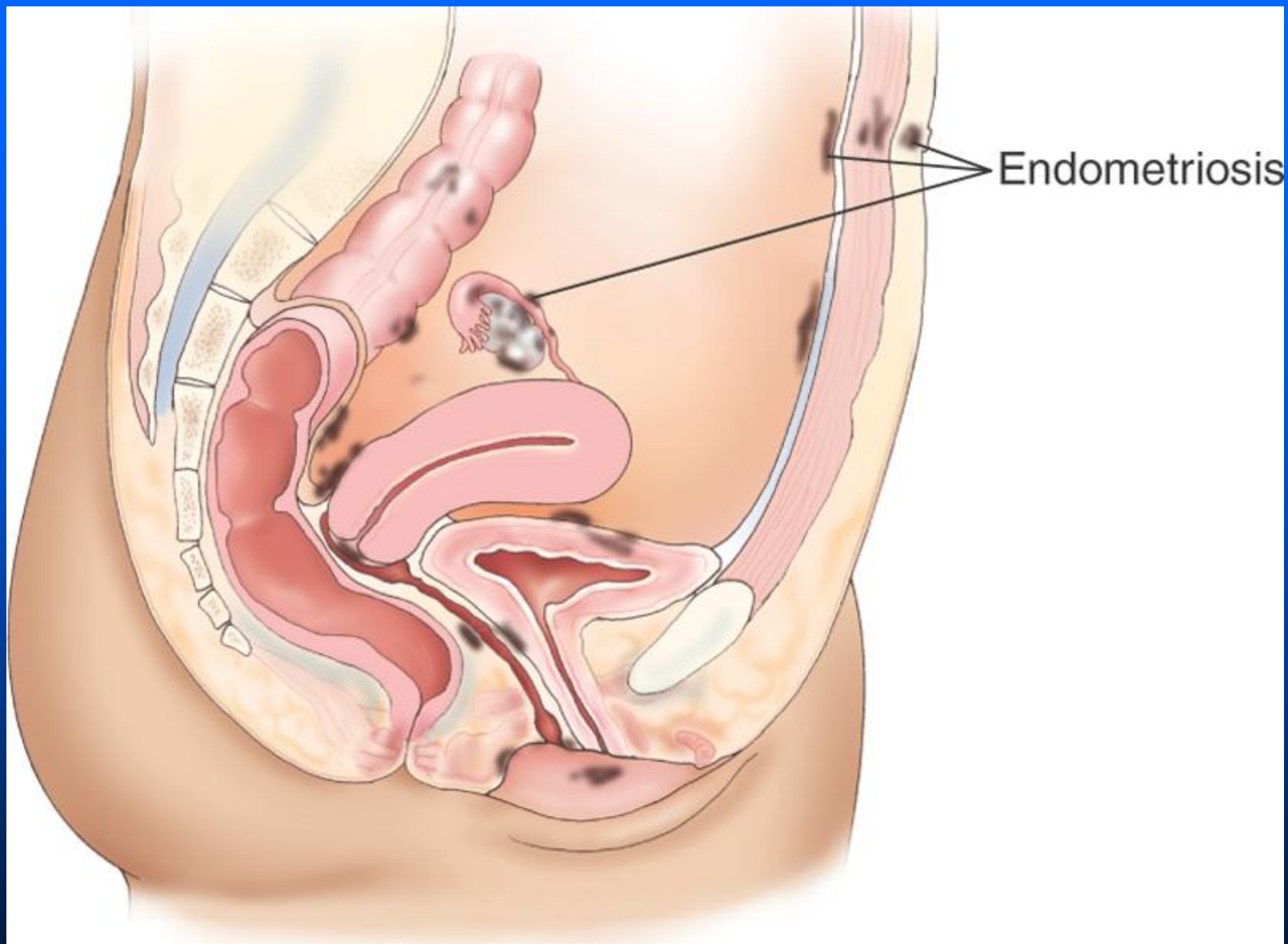
B Retroversion

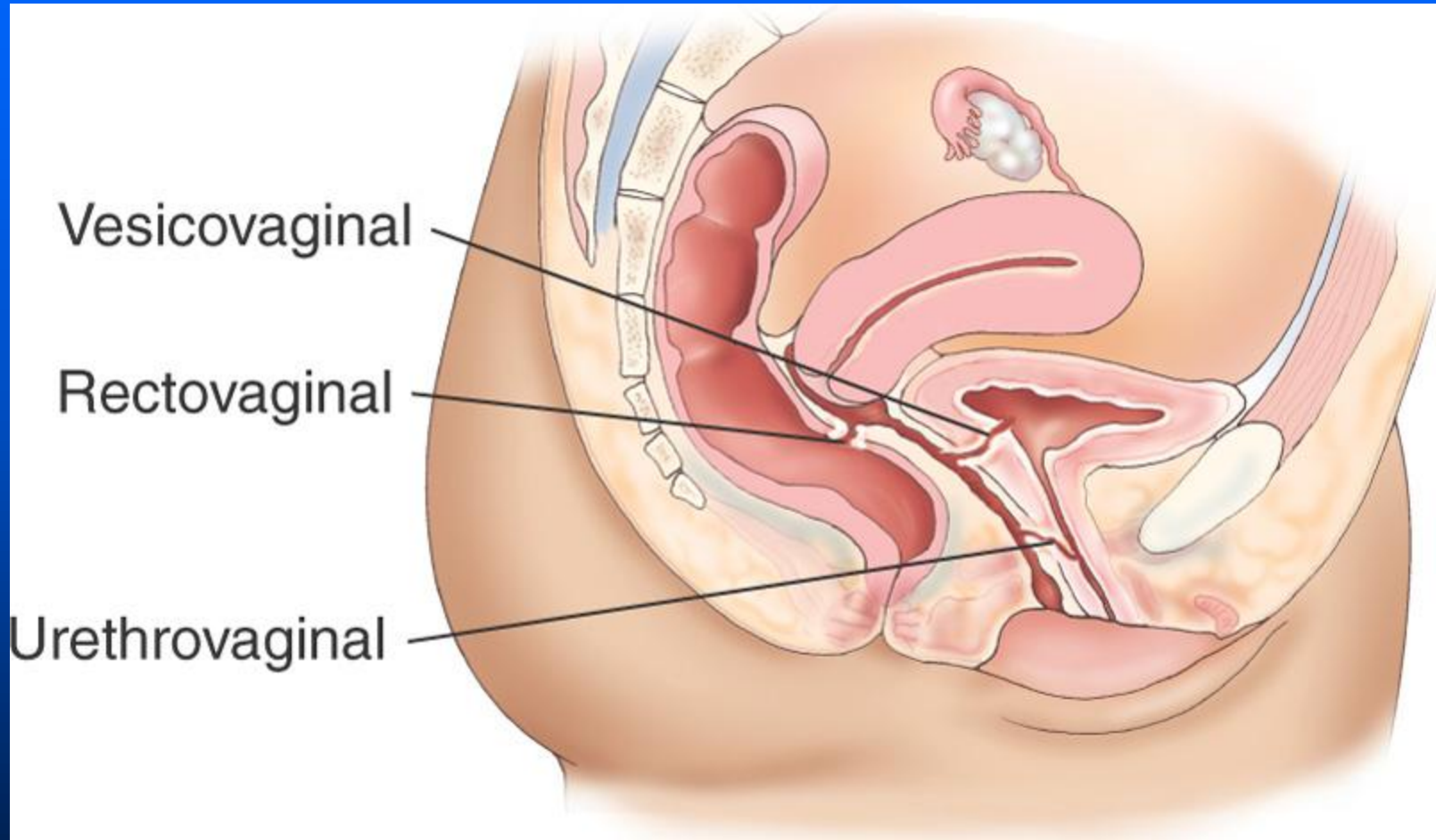


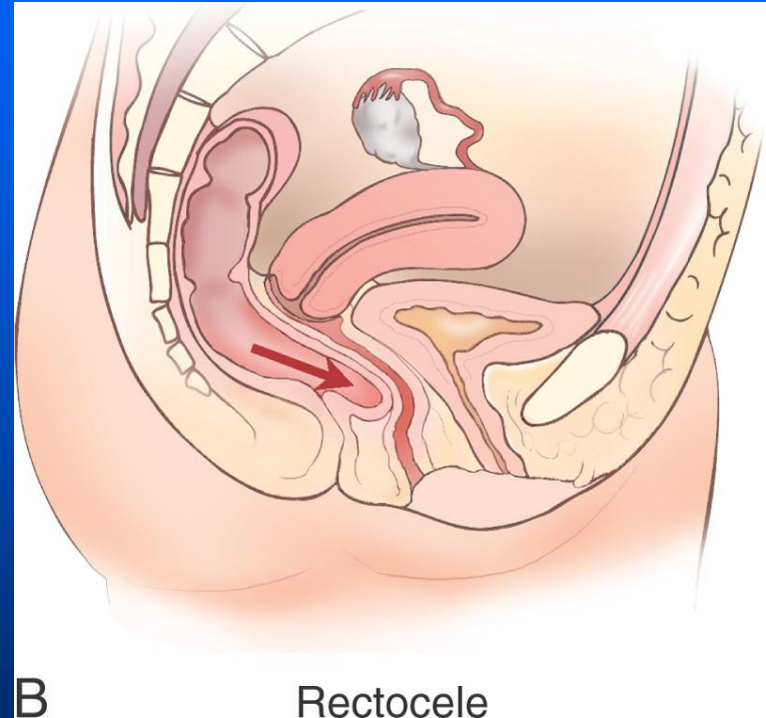
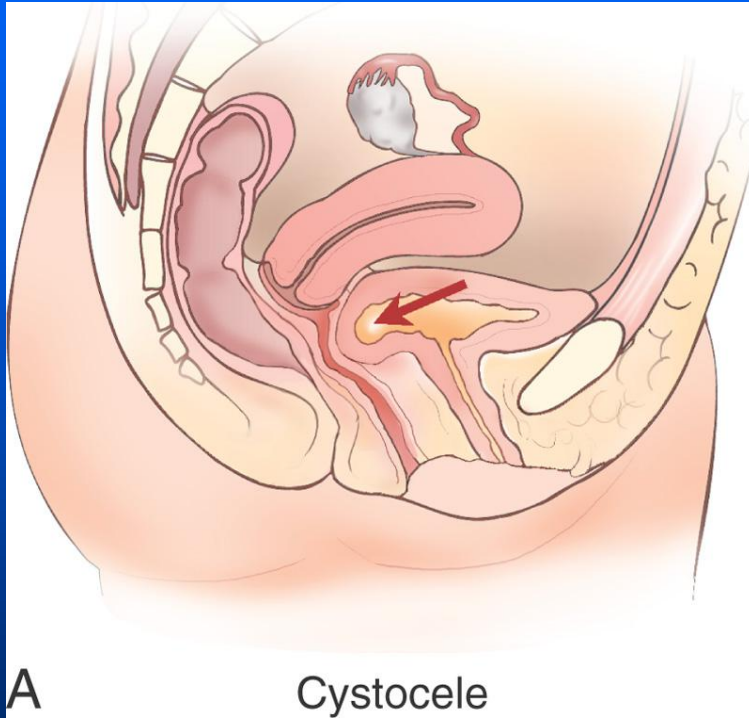
D Retroflexion

Pathologies: Female Reproductive System, (cont.)

- endometriosis
- leukorrhea
- colpodynia, colporrhagia
- vaginal fistulas
- cystocele, rectocele







Therapeutic Interventions: Female Reproductive System

- contraceptives
- aspirin, antiinflammatory drugs
- hormone replacement therapy
- antibiotics, vaginal creams, suppositories
- laser therapy

Surgical Interventions: Female Reproductive System

- vulvectomy
- vaginectomy, colpectomy
- colporrhaphy, colpoplasty
- oophoropexy
- laparoscopic or open (abdominal) surgery

Surgical & Therapeutic Interventions: Female Reproductive System, (cont.)

- oophorectomy, laparoscopic
- chemotherapy
- hysterectomy, abdominal, vaginal, or total abdominal
- oophorosalpingectomy, salpingo-oophorectomy
- pelvic exenteration
- colpohysterectomy, laparohysterectomy

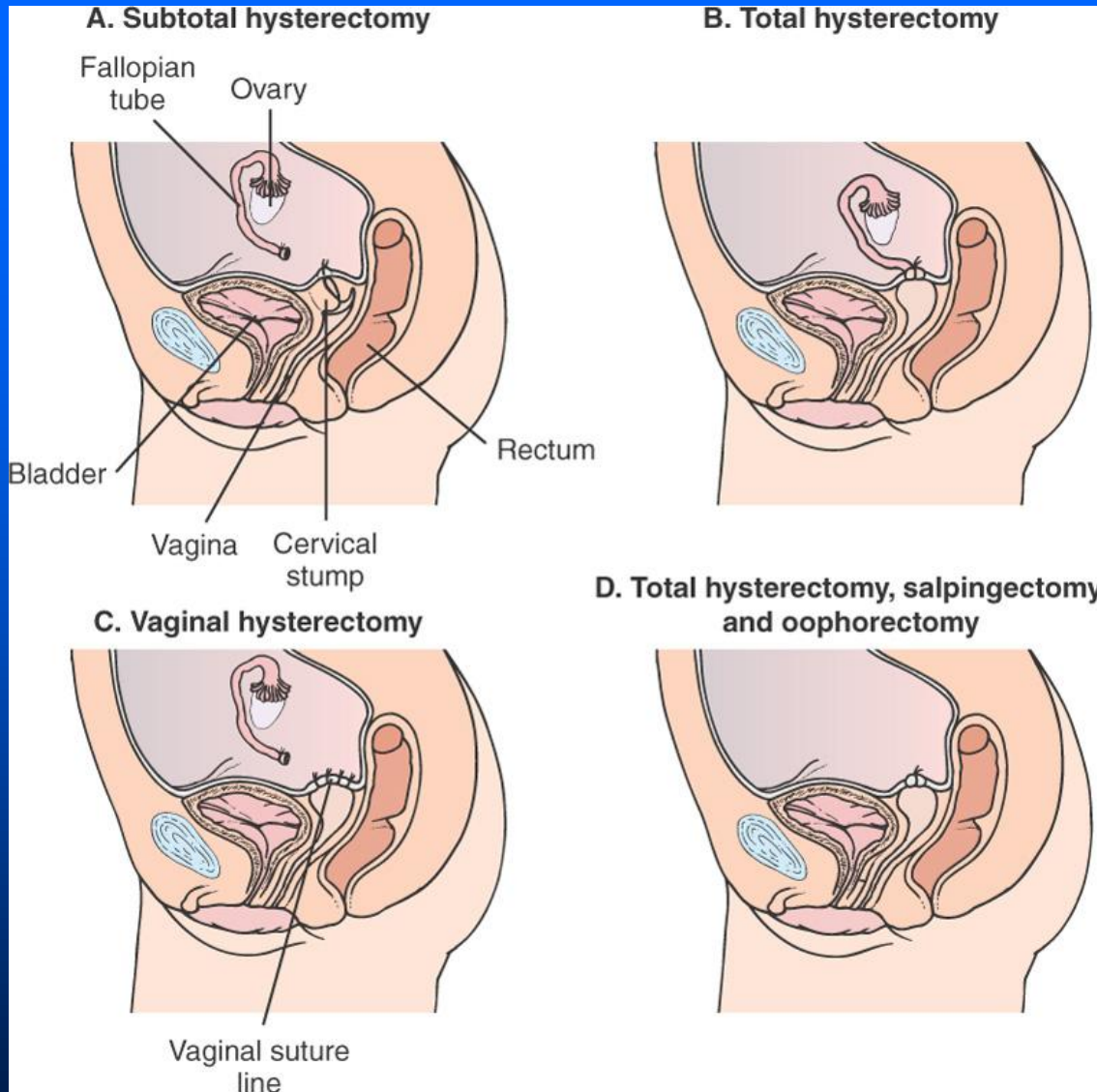


Figure 12-18 From Lewis S, Heitkemper MM, Dirksen, SR, O'Brien PG, Bucher L: Medical-Surgical Nursing, Assessment and Management of Clinical Problems, ed 7, St. Louis, 2007, Mosby.

Surgical & Therapeutic Interventions: Female Reproductive System, (cont.)

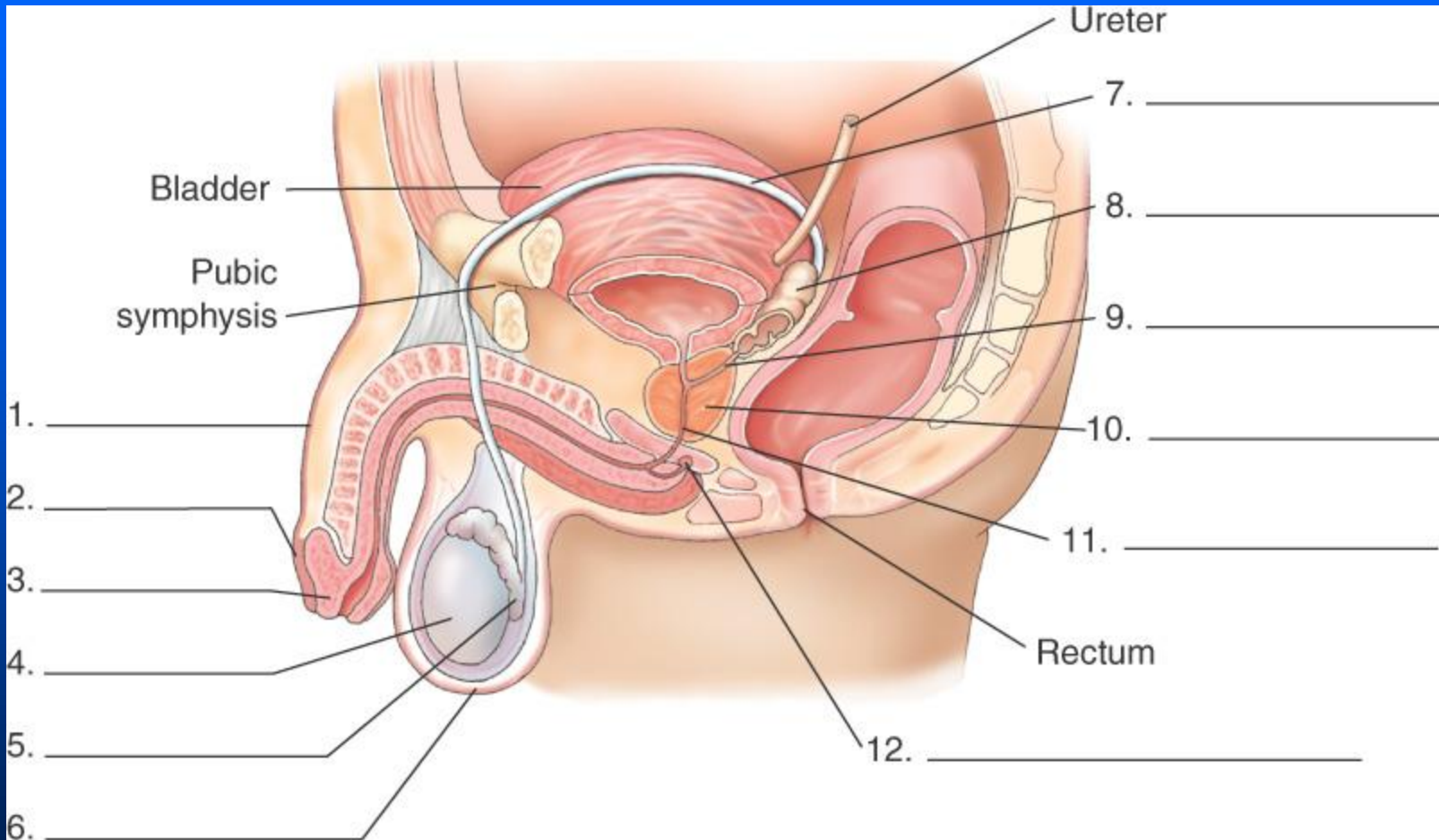
- salpingectomy, tubal ligation, salpingostomy
- dilation and curettage (D&C)
- cryotherapy, cryosurgery
- cauterization, cauterize
- hysteropexy, salpingopexy, salpingorrhaphy

Lesson 12.2 Male Reproductive System

9. State the function of the male reproductive system, and analyze associated terms.
10. Write the meanings of the word parts associated with the male reproductive system, and use the word parts to build and analyze terms.
11. Write the names of the structures of the male reproductive system when given their descriptions, define the terms associated with these structures, and label the structures.
12. Describe the production of sperm.
13. Write the names of the diagnostic tests and procedures for assessment of the male reproductive system when given descriptions of the procedures, or match diagnostic tests and procedures with their descriptions.
14. Write the names of pathologies of the male reproductive system when given their descriptions, or match them with their descriptions.
15. Match surgical and therapeutic interventions for male reproductive system pathologies with descriptions of the interventions, or write the names of the interventions when given their descriptions.

Male Reproductive System

- spermatozoa (sperm)
- singular = spermatozoon
- testes = male gonads
- singular = testis



Word Parts: Male Reproductive System

pen(o)

penis

balan(o)

glans penis

scrot(o)

scrotum

orchi(o), orchid(o),

test(o), testicul(o)

testicle

Word Parts: Male Reproductive System, (cont.)

epididym(o)

epididymis

sperm(o), spermat(o)

spermatozoa

vas(o)

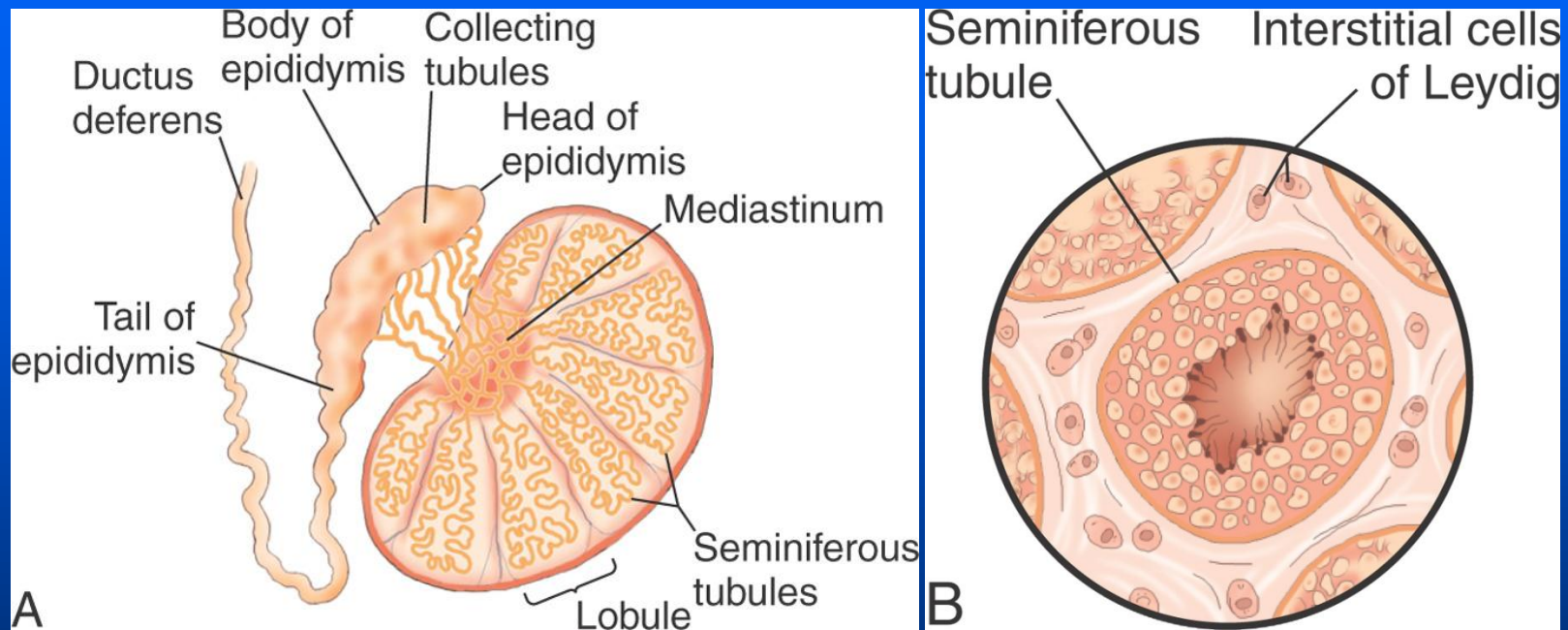
vessel; ductus deferens

prostat(o)

prostate

semin(o)

semen



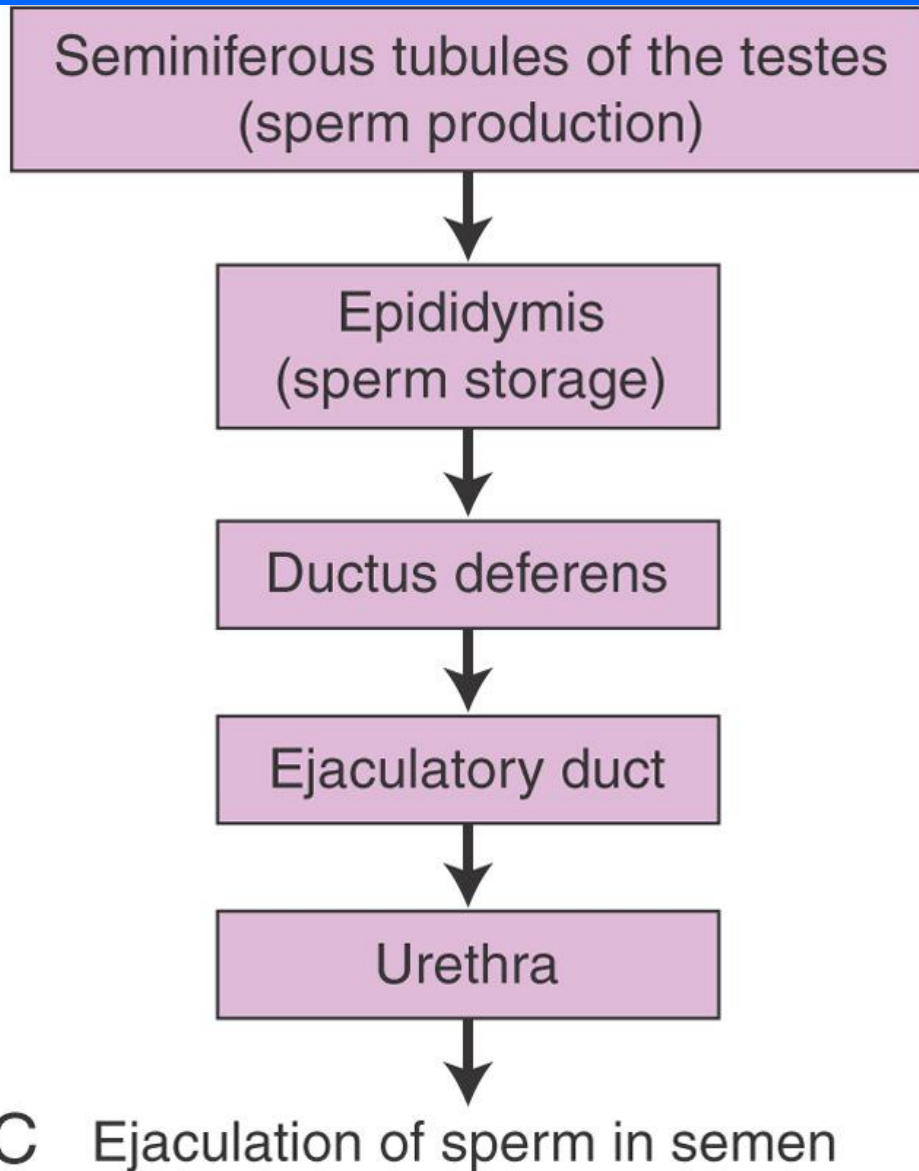
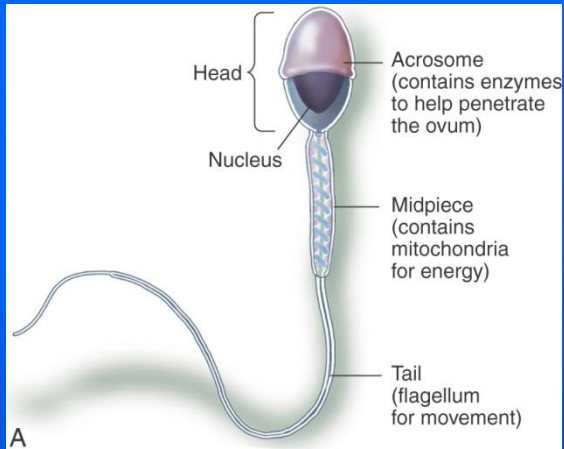
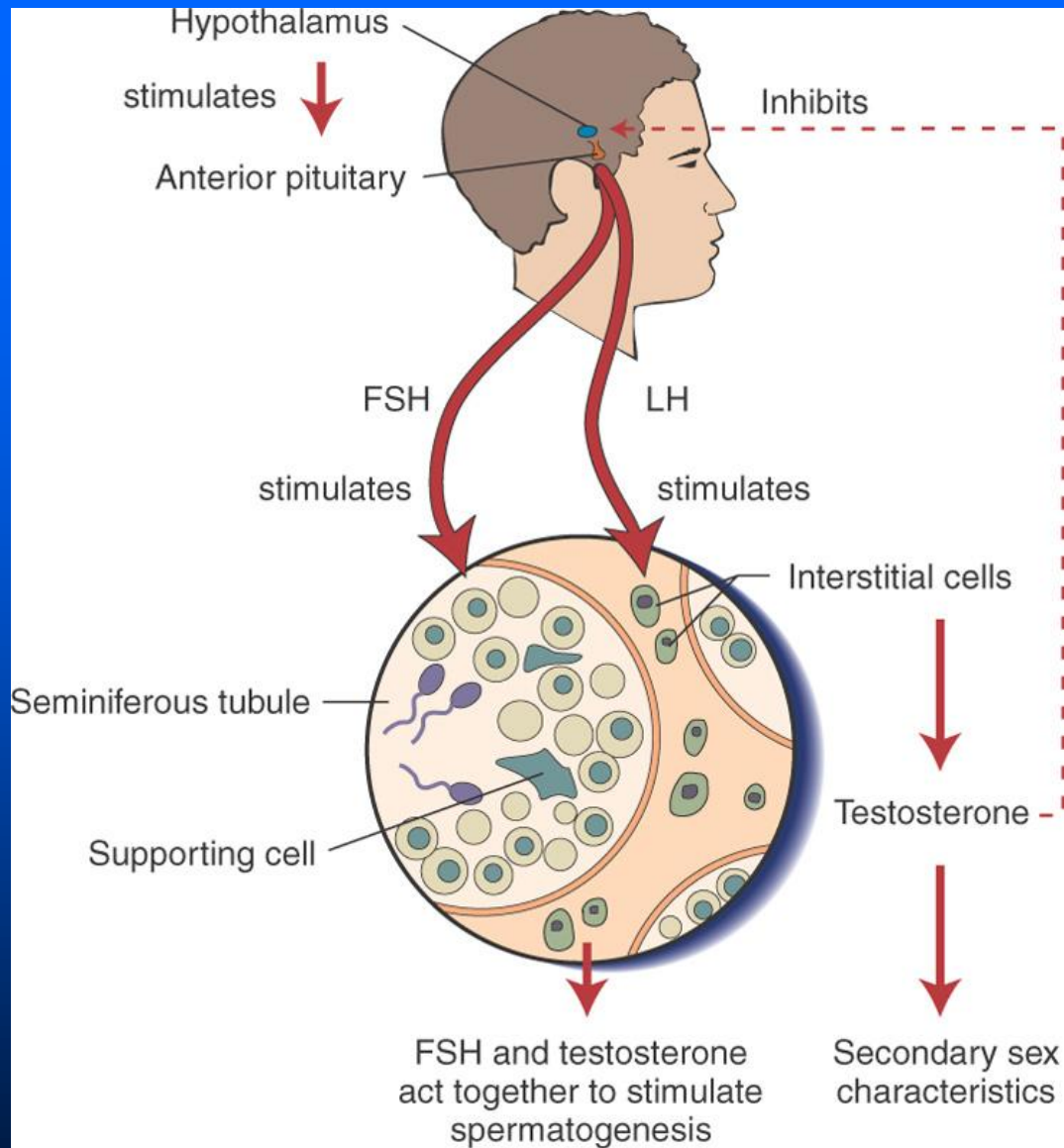


Figure 12-21 B Courtesy of Fisher Scientific Company.



Diagnostic Tests and Procedures: Male Reproductive System

- inspection of the external genitalia
 - urethral discharge, chancre
- palpation for inguinal hernias
- digital rectal examination

Diagnostic Tests and Procedures: Male Reproductive System, (cont.)

- prostate-specific antigen (PSA) test
- testicular self-examination
- needle biopsy of the prostate
- cytology
- sperm count

- Urology: the medical branch specializing in the male reproductive system

Word Parts: Male Reproductive Pathologies

- crypt(o) hidden
- olig(o) few
- varic(o) twisted and swollen

Pathologies: Male Reproductive System

- testalgia, orchialgia, orchidalgia
- Infections and Inflammation:
 - orchiditis, orchitis
 - epididymitis, orchiepididymitis
 - balanitis
 - prostatitis, benign prostatic hyperplasia



Figure 12-23 Courtesy Dr. Ellen Wald, Children's Hospital of Pittsburgh.

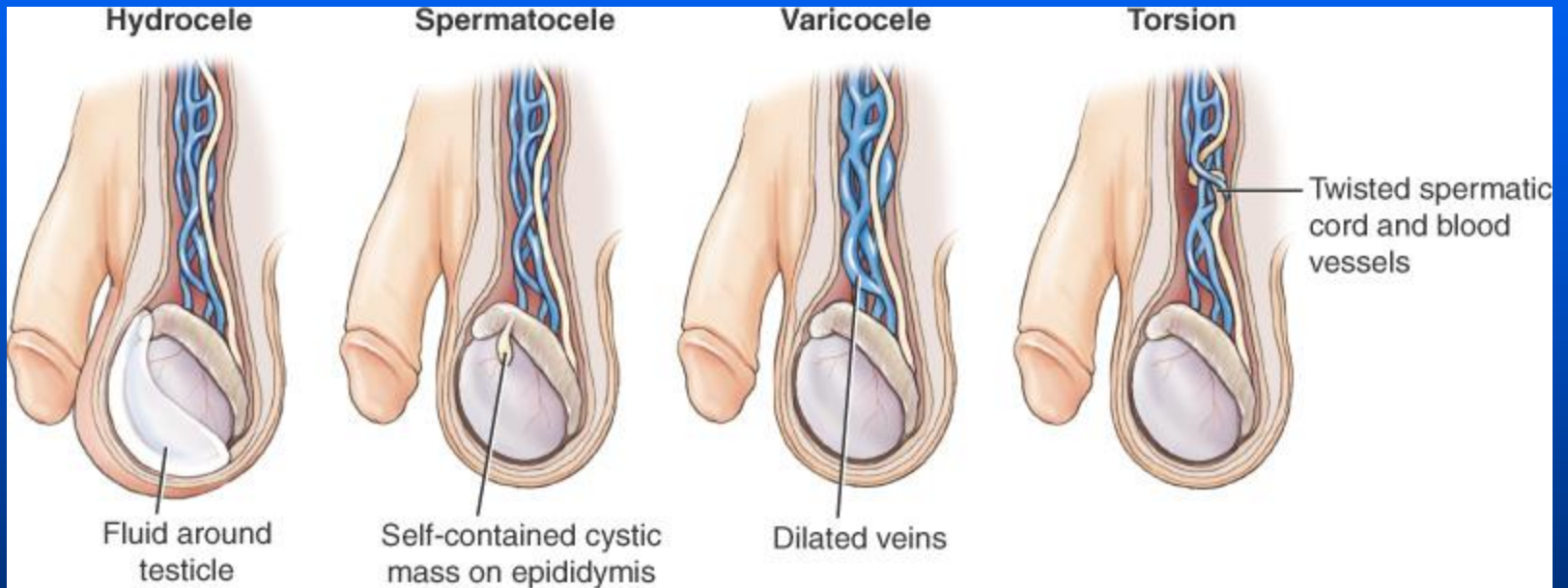
Quick Quiz!

Which of the following could be discovered during the inspection portion of an examination?

- a. urethral discharge
- b. increased PSA
- c. bulbourethral glands
- d. enlarged prostate

Pathologies: Male Reproductive System, (cont.)

- prostatic cancer
- Testicular Disorders:
 - testicular cancer
 - orchopathy, anorchidism, anorchism
 - cryptorchidism
 - testicular torsion

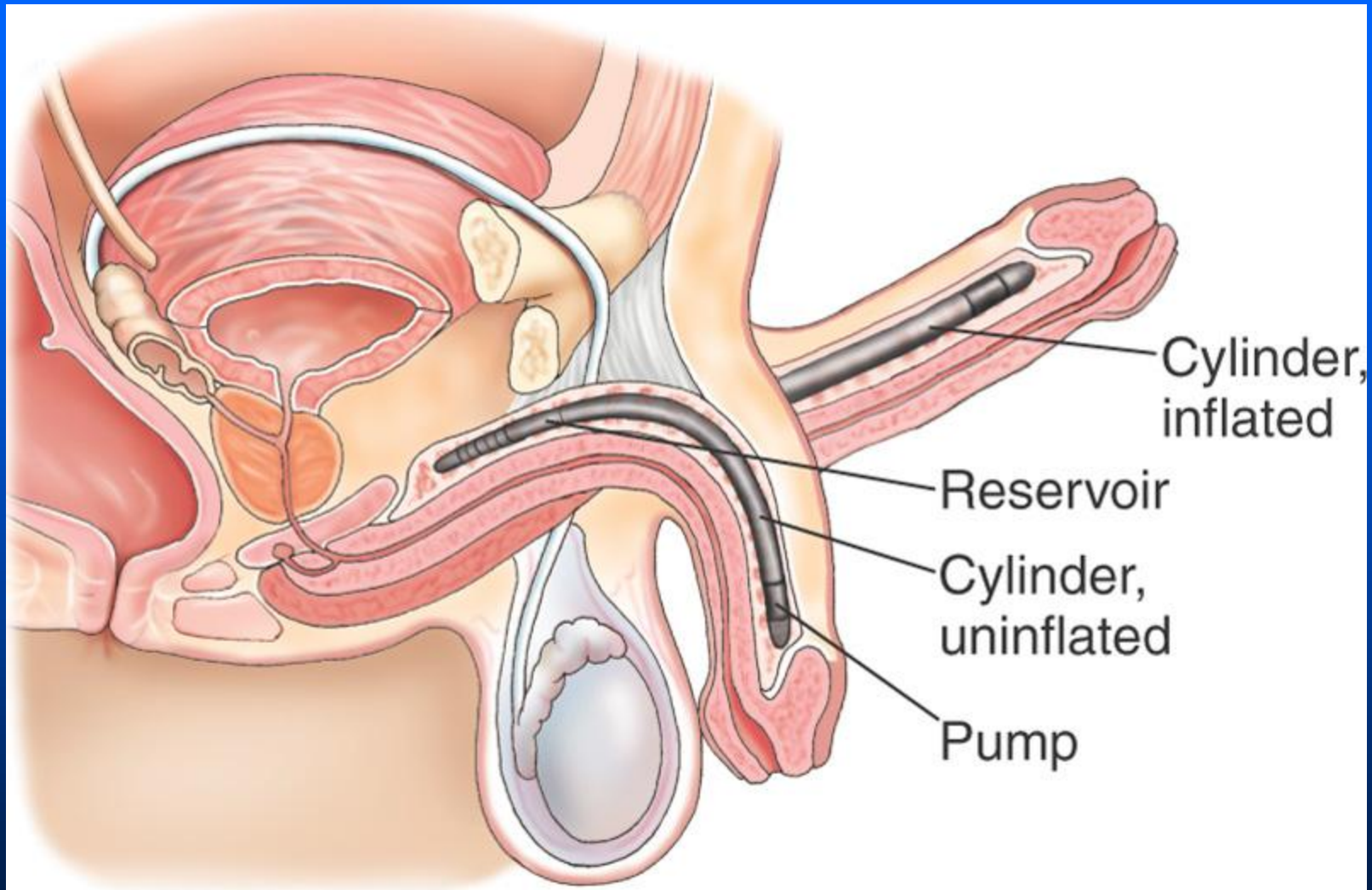


Pathologies: Male Reproductive System, (cont.)

- oligospermia
- aspermia, aspermatogenesis
- azoospermia
- erectile dysfunction
- phimosis

Surgical & Therapeutic Interventions: Male Reproductive System

- Testicular cancer:
 - semen storage
 - chemotherapeutic agents
 - orchiectomy
 - radiation therapy
 - stem-cell transplantation



Cylinder,
inflated

Reservoir

Cylinder,
uninflated

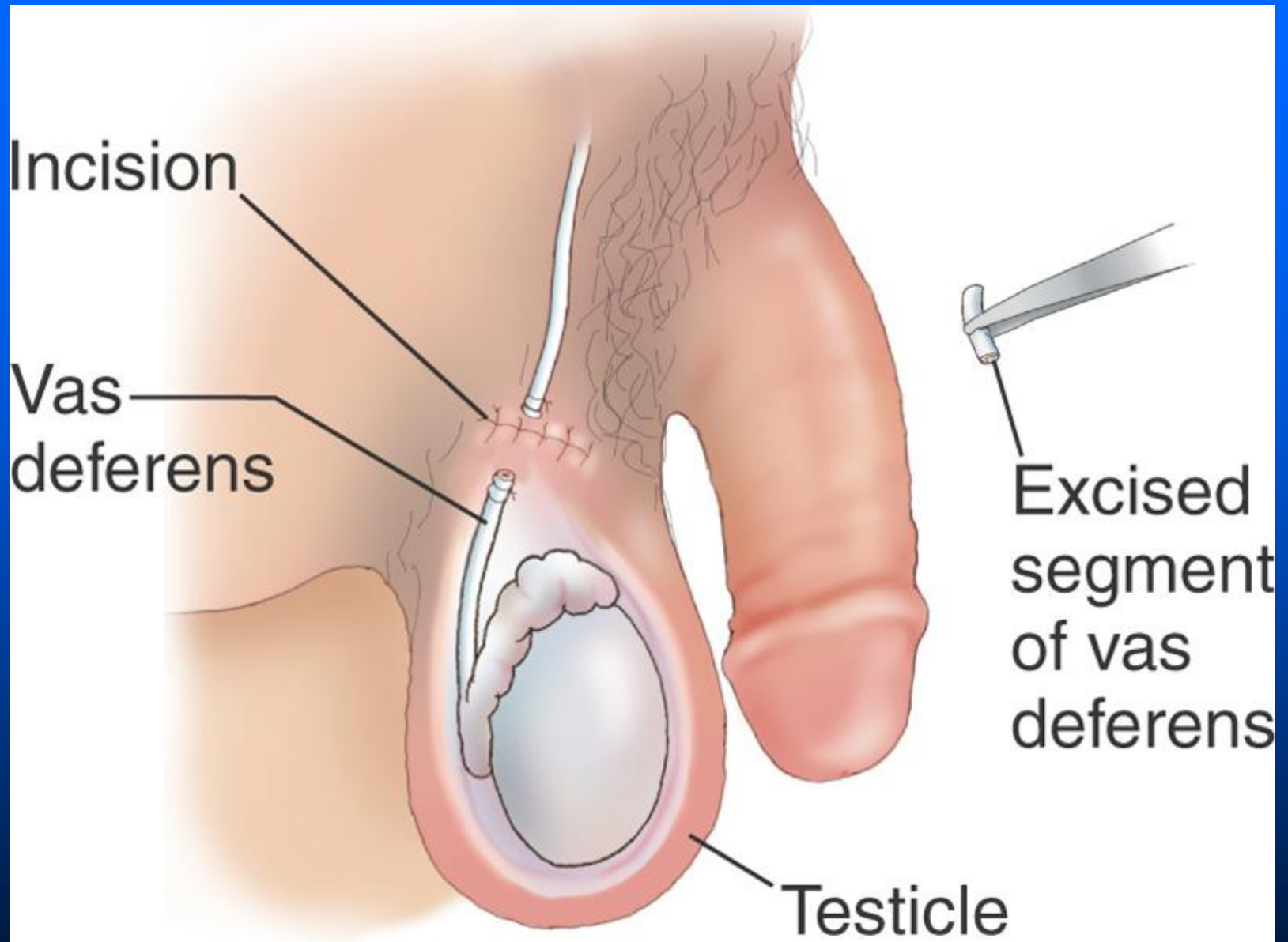
Pump

Surgical Interventions: Male Reproductive System, (cont.)

- orchioplasty, orchiotomy, orchiorrhaphy
- orchiopexy, orchidopexy
- hydrocelectomy
- circumcision

Surgical Interventions: Male Reproductive System, (cont.)

- transurethral resection prostatectomy (TURP)
- transurethral microwave thermotherapy (TUMT)
- transurethral needle ablation (TUNA), ablation
- antibiotics
- prostatectomy



Surgical Interventions: Male Reproductive System, (cont.)

- vasectomy
- vasotomy
- vasostomy
- vasovasostomy

Lesson 12.3

16. Use word parts from this chapter to determine the meaning of terms in a health care report.
17. Spell the terms accurately.
18. Pronounce the terms correctly.
19. Write the meanings of the abbreviations.
20. Categorize terms as anatomy, a diagnostic test or procedure, pathology, surgery, or therapy.

Abbreviations

BPH

Cx

D&C

FSH

GU

GYN, Gyn, gyn

hCG, HCG

Quick Quiz!

To what category does the meaning of HRT belong?

- a. anatomy
- b. diagnostic test or procedure
- c. pathology
- d. surgery
- e. therapy

Abbreviations, (cont.)

LH

NIH

Pap

PID

PMS

PSA

RPR

Abbreviations, (cont.)

STD

TAH

TSS

TUMT

TUNA

TURP

VDRL