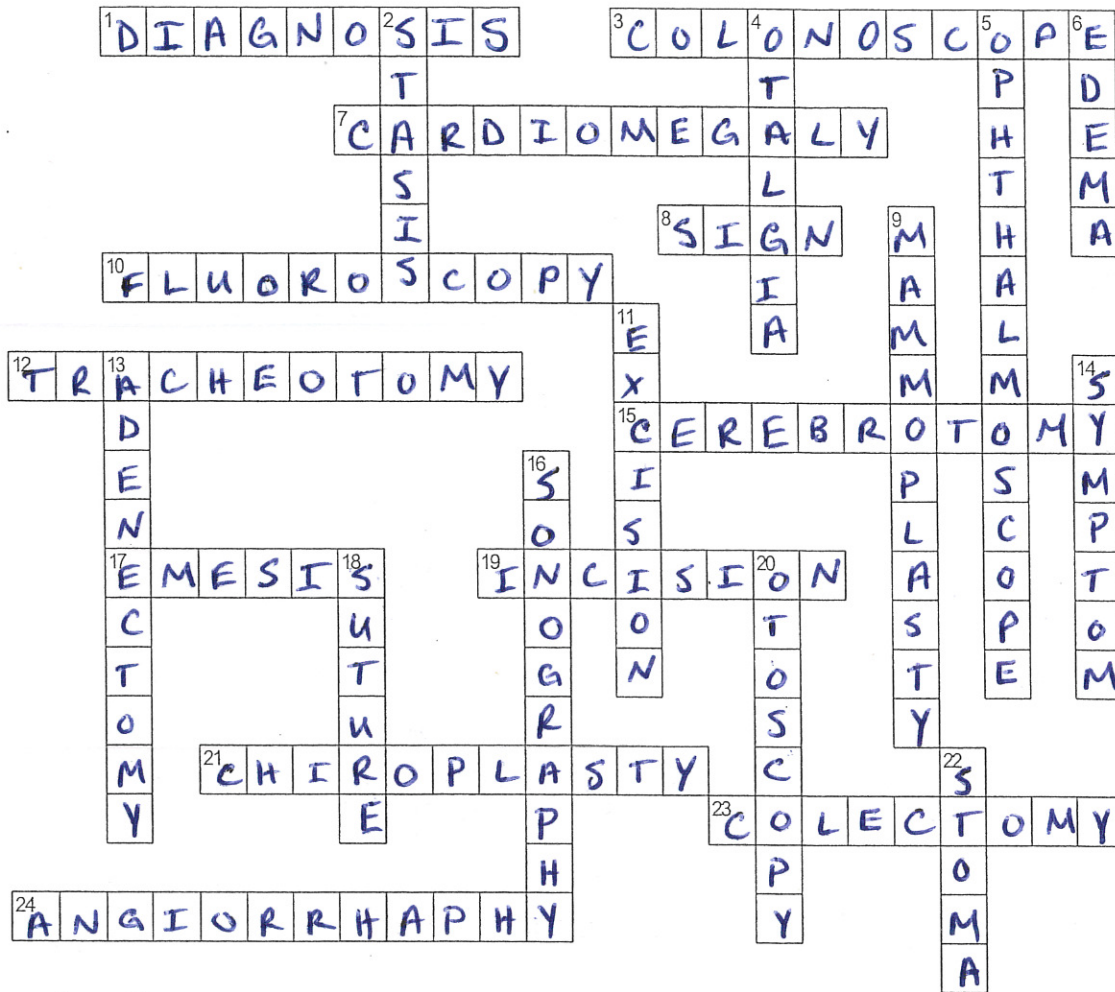


Chapter 3 Crossword Puzzle

Complete the crossword puzzle by writing a term for each clue that is given.



www.CrosswordWeaver.com

Across

- 1 identification of disease by scientific evaluation
- 3 instrument used in colonoscopy
- 7 enlarged heart
- 8 objective evidence of an illness
- 10 viewing x-ray image in real time
- 12 incision into the trachea
- 15 incision of the brain
- 17 material expelled in vomiting
- 19 cutting into tissue
- 21 plastic surgery of the hand
- 23 excision of the colon
- 24 suture of a blood vessel

Down

- 2 stopping or controlling
- 4 earache
- 5 instrument for examining the eye
- 6 abnormally large amounts of fluid in the tissues
- 9 surgical repair of the breast
- 11 cutting out
- 13 surgical removal of a gland
- 14 subjective evidence of disease
- 16 diagnostic ultrasound
- 18 uniting a wound by stitches
- 20 examination of the ear
- 22 a small opening